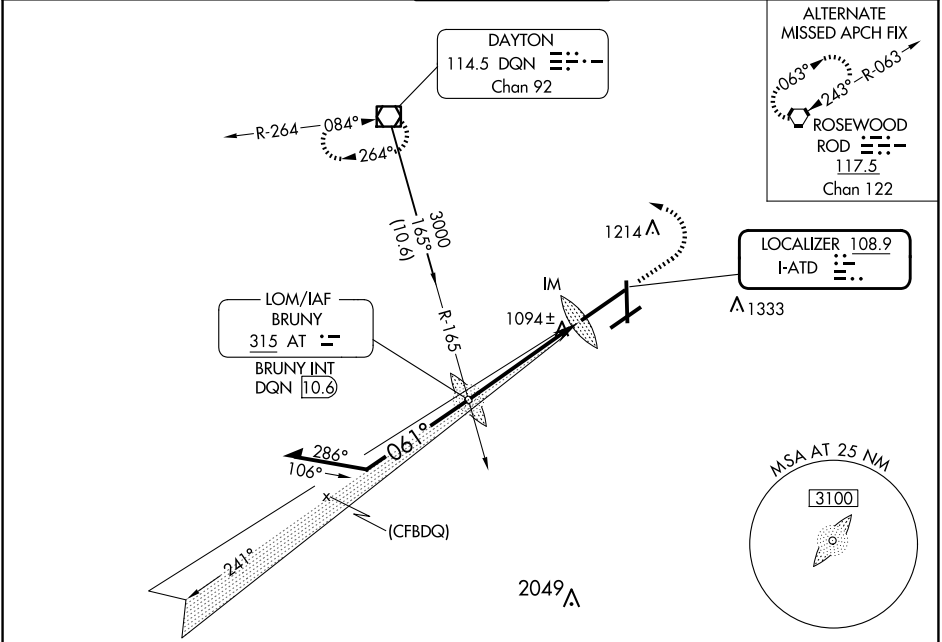


LOC I-ATD 108.9	APP CRS 061°	Rwy Idg 10900 TDZE 998 Apt Elev 1009
---------------------------	------------------------	---

ILS RWY 6L (CAT II & III)
JAMES M COX DAYTON INTL (DAY)

<div>Simultaneous approach authorized. CAT II: RVR 1000 authorized with specific OPSPEC, MSPEC, or LOA approval and use of autoland or HUD to touchdown.</div>	ALSF-2	MISSED APPROACH: Climb to 2000 then climbing left turn to 3000 direct DQN VOR/DME and hold.
--	--------	---

ATIS 125.8	COLUMBUS APP CON 134.45 323.15	DAYTON TOWER 119.9 257.7	GND CON 121.9	CINC DEL 121.75
----------------------	--	------------------------------------	-------------------------	---------------------------



ELEV 1009		D	TDZE 998
-----------	--	----------	----------

Remain within 10 NM

BRUNY LOM/INT

2000 3000 DQN

VGSI and ILS glidepath not coincident (VGSI Angle 3.00/TCH 67).

IM 1098

5 NM 967'

GS 3.00° TCH 50

CATEGORY	A	B	C	D
S-ILS 6L	CAT II RA 99/12 100 DA 1098			
S-ILS 6L	CAT III RVR 06			

CATEGORY II & III ILS - SPECIAL AIRCREW & AIRCRAFT CERTIFICATION REQUIRED

HIRL all Rwys
TDZ/CL Rwy 6L
REIL Rwys 6R and 36

EC-2, 07 AUG 2025 to 04 SEP 2025

EC-2, 07 AUG 2025 to 04 SEP 2025