

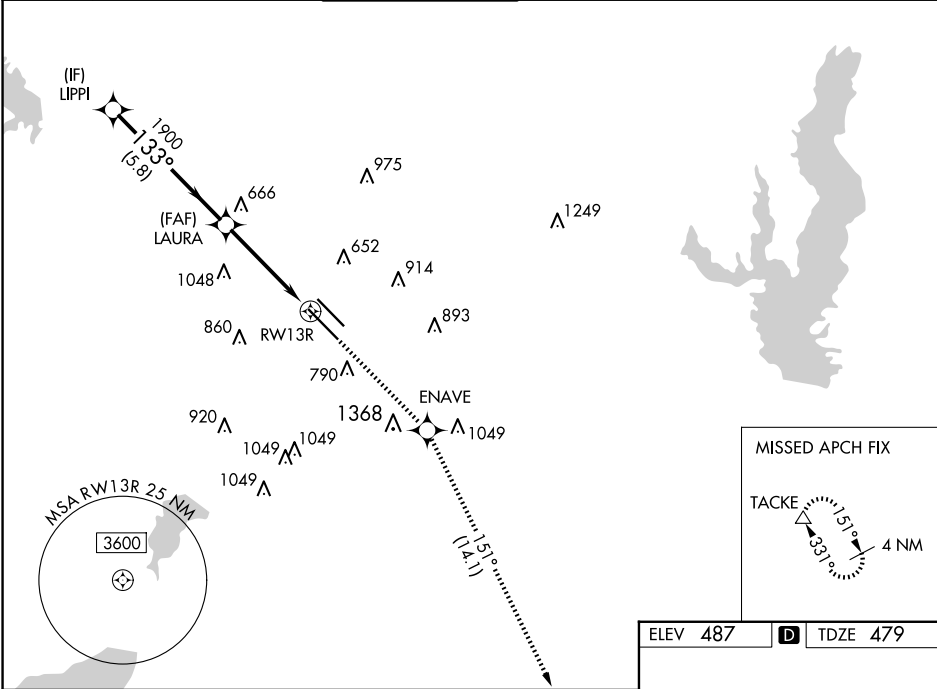
WAAS CH 82436 W13A	APP CRS 133°	Rwy Idg 8310 TDZE 479 Apt Elev 487
--	------------------------	---

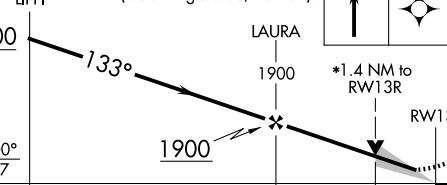
RNAV (GPS) Z RWY 13R

DALLAS LOVE FLD (DAL)

RNP APCH.	Simultaneous approach authorized. Use of FD or AP providing RNAV track guidance required during simultaneous operations. LNAV procedure NA during simultaneous operations. For uncompensated Baro-VNAV systems, LNAV/VNAV NA below -6°C or above 54°C.	MISSED APPROACH: Climb to 3000 direct ENAVE and on track 151° to TACKE and hold.
-----------	--	---

D-ATIS 120.15	LONE STAR APP CON NORTH 124.3 282.275 SOUTH 125.2 343.65	LOVE TOWER 123.7 239.3	GND CON 121.75 348.6	CLNC DEL 127.9	CPDLC
-------------------------	--	----------------------------------	--------------------------------	--------------------------	-------



VGSI and RNAV glidepath not coincident (VGSI Angle 3.00/TCH 52).					3000 ↑		ENAVE ✦		fr 151°		TACKE △	
											*LNAV only.	
CATEGORY					A		B		C		D	
LPV DA					679/40		200 (200-¾)					
LNAV/ VNAV DA					834/60		355 (400-1¼)					
LNAV MDA					980/55		501 (500-1)		980-1½		501 (500-1½)	
CIRCLING					1080-1 593 (600-1)		1140-1 653 (700-1)		1220-2 733 (800-2)		1520-3 1033 (1100-3)	

