

DALLAS, TEXAS

AL-106 (FAA)

24305

WAAS CH <b>72808</b> <b>W31A</b>	APP CRS <b>313°</b>	Rwy Idg <b>8000</b> TDZE <b>477</b> Apt Elev <b>487</b>
--	------------------------	---

RNAV (GPS) Y RWY 31L  
DALLAS LOVE FLD (DAL)

RNP APCH.

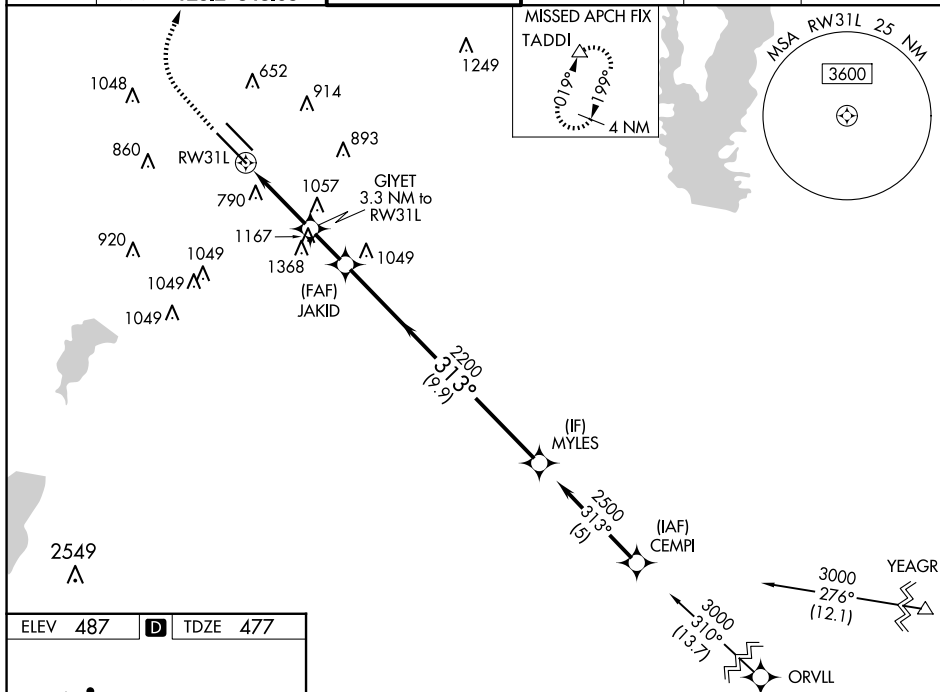
**T** Simultaneous approach authorized. Use of FD or AP providing RNAV track guidance required during simultaneous operations. LNAV procedure NA during simultaneous operations. For inop ALS, increase LPV all Cats visibility to RVR 4500.

MALSR

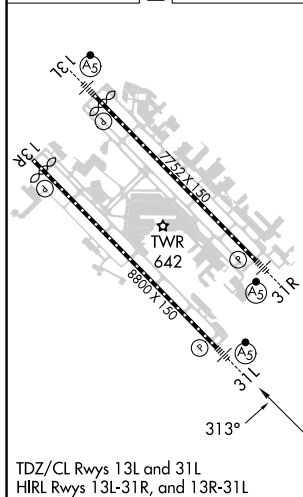


**MISSED APPROACH:** Climb to 1700 then climbing right turn to 4000 direct TADDI and hold.

D-ATIS <b>120.15</b>	LONE STAR APP CON NORTH <b>124.3 282.275</b> SOUTH <b>125.2 343.65</b>	LOVE TOWER <b>123.7 239.3</b>	GND CON <b>121.75 348.6</b>	CLNC DEL <b>127.9</b>	CPDLC
-------------------------	--	----------------------------------	--------------------------------	--------------------------	-------



ELEV 487	<b>D</b>	TDZE 477
----------	----------	----------



1700

4000

TADDI

\*LNAV only.

RW31L

GIYET  
3.3 NM to  
RW31L

JAKID  
2200

MYLES

2500

313°

1600\*

2200

GP 3.08°  
TCH 55

2.5 NM

0.8 NM

1.8 NM

9.9 NM

CATEGORY	A	B	C	D
LPV DA	770/22 293 (300-½)			
LNAV MDA	1360/40 883 (900-¾)	1360-2	883 (900-2)	
CIRCLING	1360-1¼ 873 (900-1¼)	1360-2½ 873 (900-2½)	1520-3 1033 (1100-3)	

DALLAS, TEXAS  
Amdt 1E 13SEP18

32°51'N-96°51'W

DALLAS LOVE FLD (DAL)

## RNAV (GPS) Y RWY 31L

SC-2, 07 AUG 2025 to 04 SEP 2025