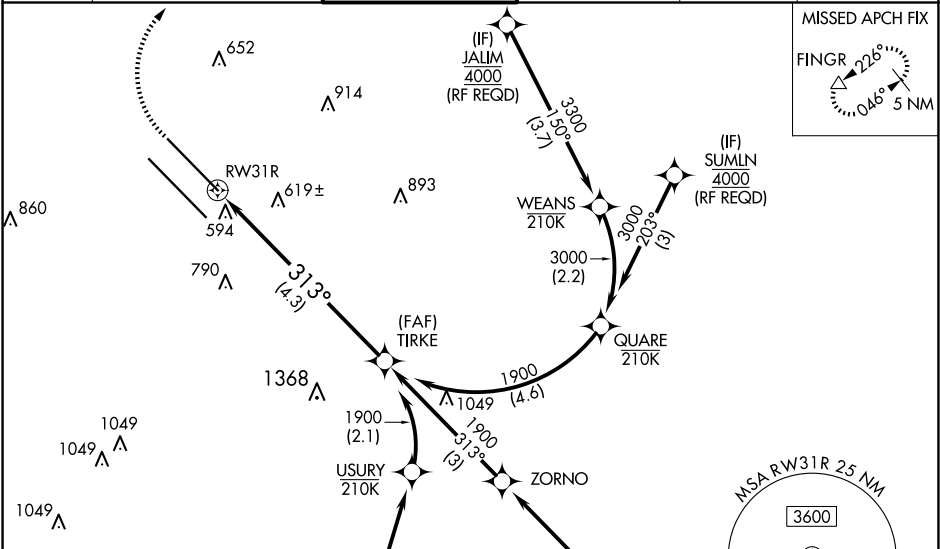


APP CRS	Rwy Idg	6952
313°	TDZE	487
	Apt Elev	487

RNAV (RNP) Z RWY 31R
DALLAS LOVE FLD (DAL)

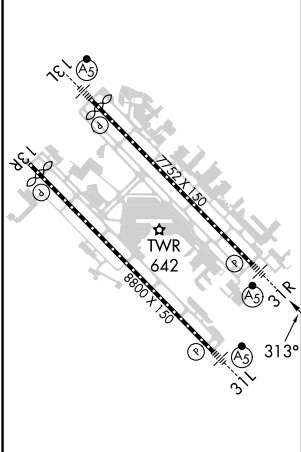
RNP AR APCH.	MALSR	MISSED APPROACH: Climb to 900 then climbing right turn to 5000 direct FINGR and hold.
▼ For uncompensated Baro-VNAV systems, procedure NA below -5°C (23°F) or above 54°C (130°F). Use of FD or AP providing RNAV track guidance required during simultaneous operations. Simultaneous approach authorized.		

D-ATIS	LONE STAR APP CON	LOVE TOWER	GND CON	CLNC DEL	CPDLC
120.15	NORTH 124.3 282.275 SOUTH 125.2 343.65	123.7 239.3	121.75 348.6	127.9	




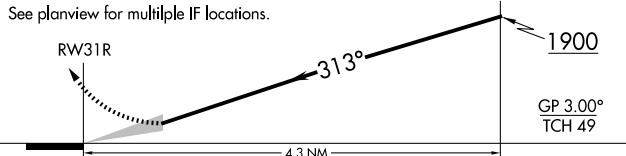


RADAR REQUIRED

ELEV 487	D	TDZE 487
----------	---	----------



TDZ/CL Rwy 13L and 31L
HIRL Rwy 13L-31R, and 13R-31L

900	5000	FINGR	VGSI and RNAV glidepath not coincident (VGSI Angle 3.00/TCH 55).	
				
See planview for multiple IF locations.				
				
CATEGORY	A	B	C	D
RNP 0.16 DA		796/24	309 (400-½)	
RNP 0.30 DA		895/45	408 (500-¾)	
AUTHORIZATION REQUIRED				