

APP CRS  
313°

Rwy Idg	<b>8000</b>
TDZE	<b>476</b>
Apt Elev	<b>487</b>

## RNAV (RNP) Z RWY 31L

DALLAS LOVE FLD (DAL)

▼ For uncompensated Baro-VNAV systems, procedure NA below -5°C (23°F) or above 48°C (119°F). Simultaneous approach authorized. GPS required. Use of FD or AP providing RNAV track guidance required during simultaneous operations.

For inop MALS, increase RNP 0.30 visibility all Cats to 2½ miles.

MALSR

**MISSED APPROACH:** Climb to 1700 then climbing right turn to 4000 direct TADDI and hold.

D-ATIS  
**120.15**

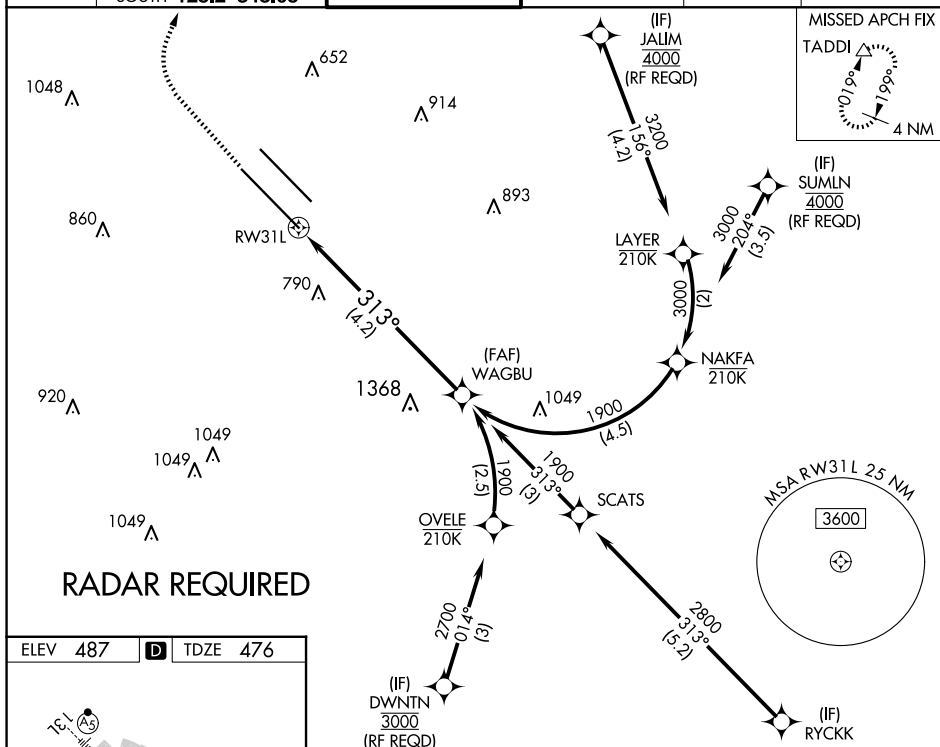
LONE STAR APP CON  
NORTH **124.3 282.275**  
SOUTH **125.2 343.65**

LOVE TOWER  
123.7 239.3

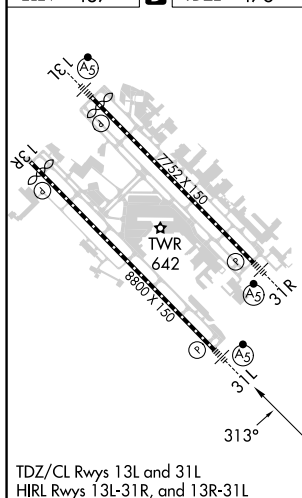
GND CON  
121.75 348.6

CLNC DE  
127-9

CPDLC



ELEV 487	<b>D</b>	TDZE 476
----------	----------	----------



1700	4000	TADDI	See planview for multiple IF locations.
------	------	-------	-----------------------------------------

