

APP CRS 133°	Rwy Idg	8310
	TDZE	478
	Apt Elev	487

RNAV (RNP) X RWY 13R

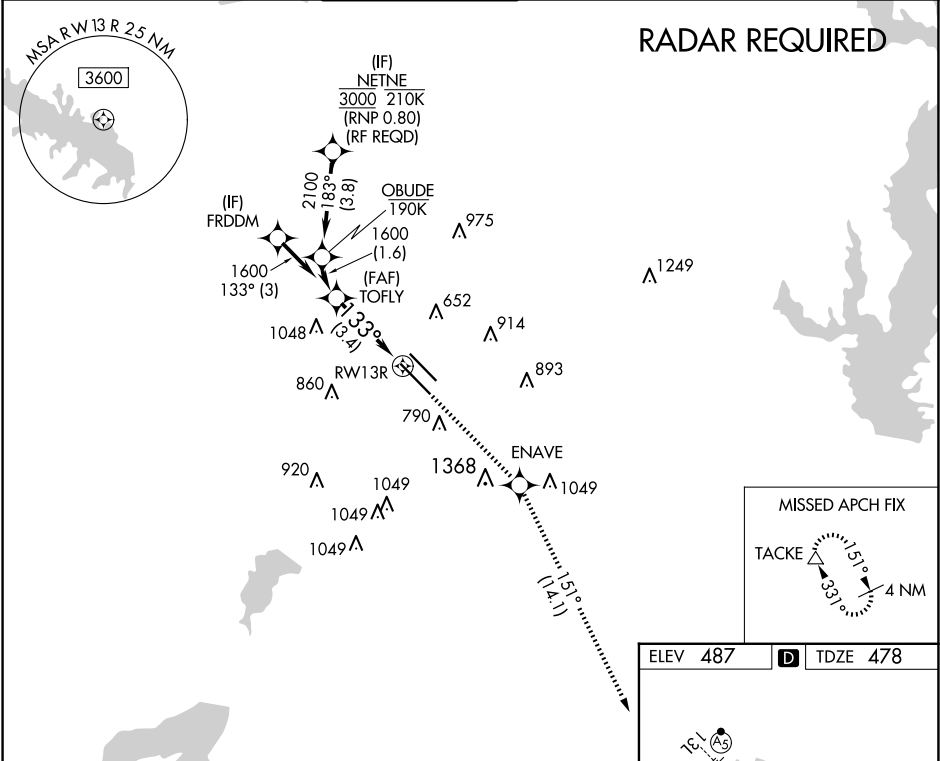
DALLAS LOVE FLD (DAL)

▼

For uncompensated Baro-VNAV systems, procedure NA below -5°C (23°F) or above 54°C (130°F). Simultaneous approach authorized. GPS required. Use of FD or AP providing RNAV track guidance required during simultaneous operations.

MISSED APPROACH: Climb to 3000 direct ENAVE and on track 151° to TACKE and hold.

D-ATIS 120.15	LONE STAR APP CON NORTH 124.3 282.275 SOUTH 125.2 343.65	LOVE TOWER 123.7 239.3	GND CON 121.75 348.6	CLNC DEL 127.9	CPDLC
-------------------------	--	----------------------------------	--------------------------------	--------------------------	-------



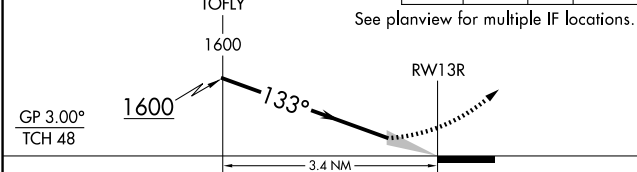
VGSI and RNAV glidepath not coincident (VGSI Angle 3.00/TCH 52).

3000 ENAVE TACKE

↑

151°

△



CATEGORY	A	B	C	D
RNP 0.20 DA		781/50	303 (300-1)	
RNP 0.25 DA		833/60	355 (400-1¼)	
RNP 0.30 DA		929-1½	451 (500-1½)	

AUTHORIZATION REQUIRED

