

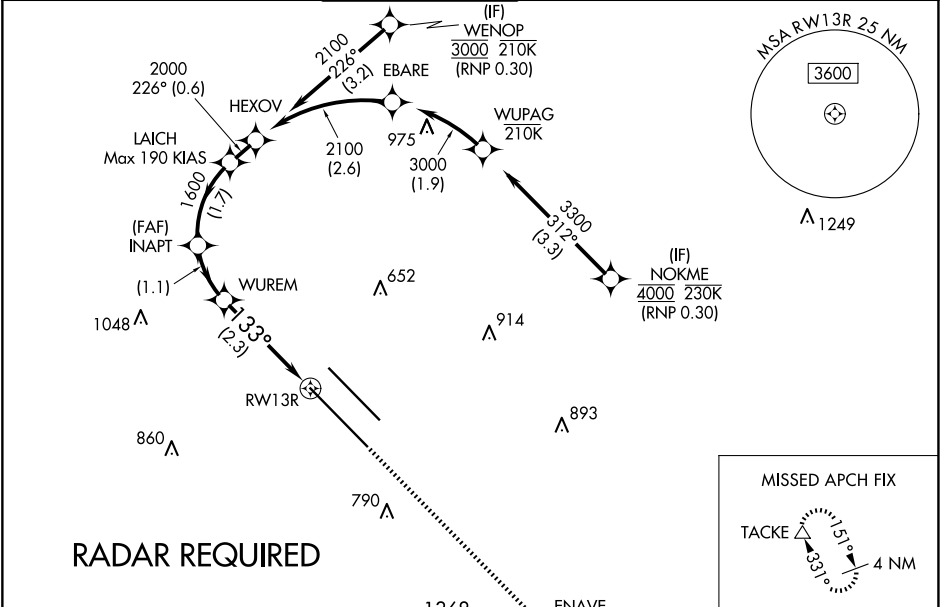
APP CRS	Rwy Idg	8310
133°	TDZE	478
	Apt Elev	487

RNAV (RNP) W RWY 13R
DALLAS LOVE FLD (DAL)

⚠ For uncompensated Baro-VNAV systems, procedure NA below -5°C (23°F) or above 54°C (130°F). Simultaneous approach authorized. RF required. GPS required. Use of FD or AP providing RNAV track guidance required during simultaneous operations.

MISSED APPROACH: Climb to 3000 direct ENAVE and on track 151° to TACKE and hold.

D-ATIS 120.15	LONE STAR APP CON NORTH 124.3 282.275 SOUTH 125.2 343.65	LOVE TOWER 123.7 239.3	GND CON 121.75 348.6	CLNC DEL 127.9	CPDLC
-------------------------	--	----------------------------------	--------------------------------	--------------------------	-------



ELEV 487	D	TDZE 478
----------	----------	----------

VGSI and RNAV glidepath not coincident (VGSI Angle 3.00/TCH 52).

HEXOV
2100
226°

LAICH
2000

INAPT
1600

WUREM
1250

RW13R
133°

GP 3.00°
TCH 48

0.6 NM 1.7 NM 1.1 NM 2.3 NM

See planview for multiple IF locations.

CATEGORY	A	B	C	D
RNP 0.20 DA		781/50	303 (300-1)	
RNP 0.25 DA		833/60	355 (400-1¼)	
RNP 0.30 DA		929-1½	451 (500-1½)	

AUTHORIZATION REQUIRED

