

DALLAS LOVE FLD (DAL)
DALLAS, TEXAS

RAMBL SIX DEPARTURE (RNAV)

TOP ALTITUDE
Rwys 13L/R
Rwys 31L/R

ARILE
5000 240K

177°

NNOLN
7000 4000

247°

MEERZ
7000 230K

1000

313°

133°

1000

XPRES
9000

7000

2100

177°

RAMBL
10000

TAKEOFF MINIMUMS
Rwys 13L/R: Standard with minimum climb of 500' per NM to 1200.
Rwys 31L/R: Standard with minimum climb of 500' per NM to 1000.

TOP ALTITUDE:
Rwys 13L/R: 3000
Rwys 31L/R: 10000

TAKEOFF MINIMUMS

Rwys 13L/R: Standard with minimum climb of 500' per NM to 1200.

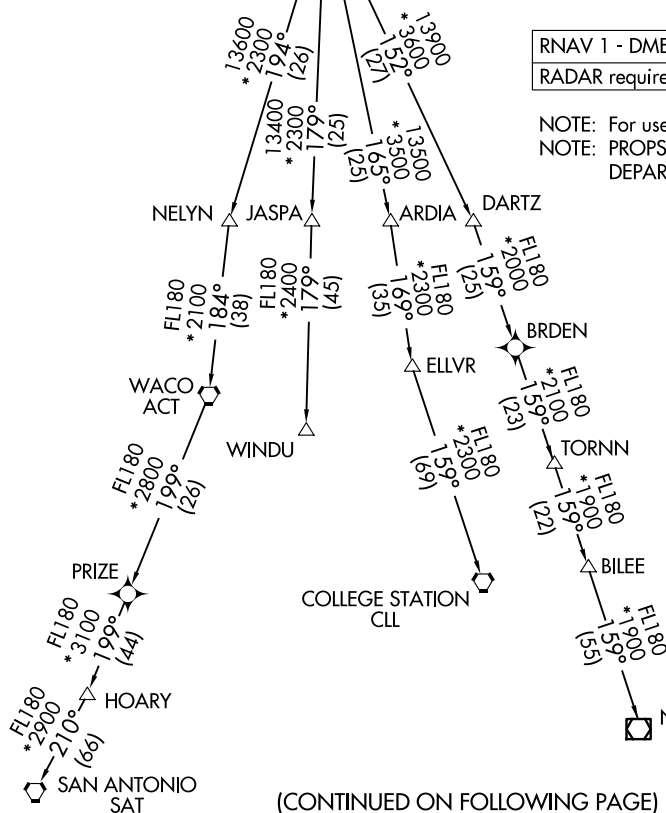
Rwys 31L/R: Standard with minimum climb of 500' per NM to 1000.

RNAV 1 - DME/DME/IRU or GPS required.

RADAR required.

NOTE: For use by turbojet aircraft only.

NOTE: PROPS: File and expect JOE POOL DEPARTURE.



(CONTINUED ON FOLLOWING PAGE)

NOTE: Chart not to scale.

RAMBL SIX DEPARTURE (RNAV)

(RAMBL6.RAMBL) 29DEC22

DALLAS, TEXAS
DALLAS LOVE FLD (DAL)

SC-2, 07 AUG 2025 to 04 SEP 2025