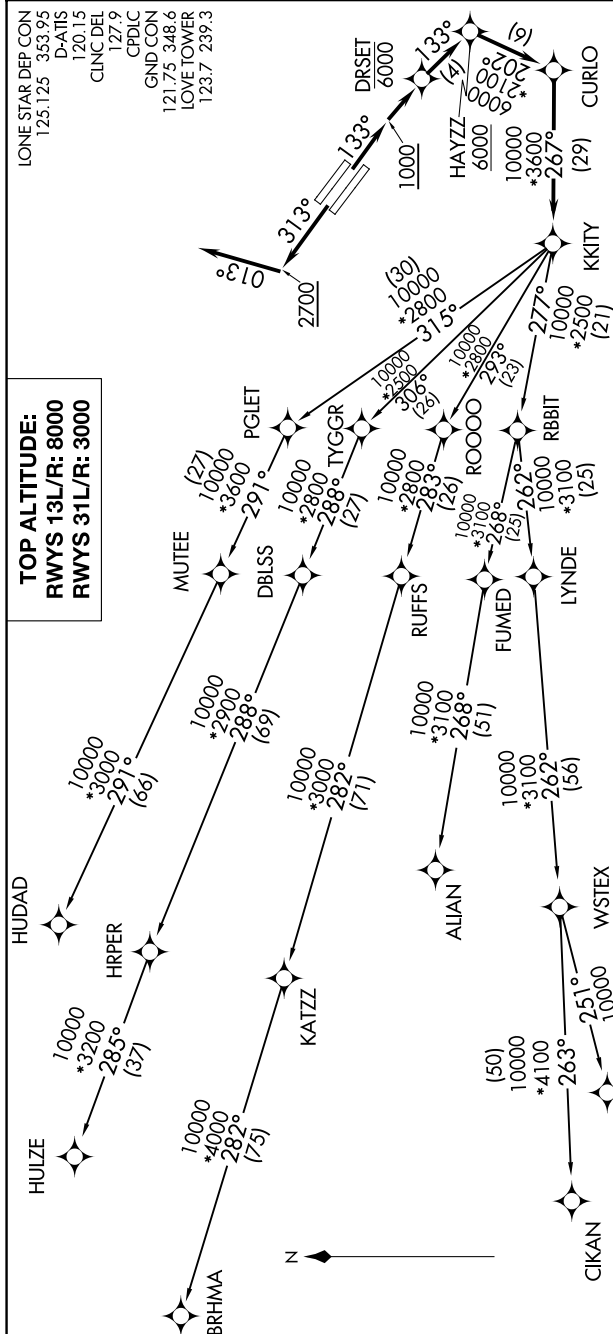


TOP ALTITUDE:
RWYS 13L/R: 8000
RWYS 31L/R: 3000



TAKEOFF MINIMUMS
Rwys 13L/R: Standard with minimum climb of 500' per NM to 1200.
Rwys 31L/R: Standard with minimum climb of 500' per NM to 1000.

NOTE:	RADAR required.
NOTE:	DME/DME/IRU or GPS required.
NOTE:	RNAV 1.
NOTE:	For use by turbojet aircraft only.
NOTE:	RNAV-capable props: File and expect the SWABR RNAV SID.
NOTE:	ALJAN Transition: ATC assigned only.
NOTE:	BRHMA Transition: For aircraft inbound to Use WORTH DEPARTURE during the period of local time in lieu of the KKITY DEPARTURE.
NOTE:	WSTEX Transition: For aircraft inbound to terminal area airports only.

ANALYTICAL CONSIDERATIONS

NOTE: Chart not to scale.