

24361

LOC/DME I-DPX <u>111.1</u> Chan <b>48</b>	APP CRS <b>133°</b>	Rwy Idg <b>8310</b> TDZE <b>479</b> Apt Elev <b>487</b>
---	------------------------	---

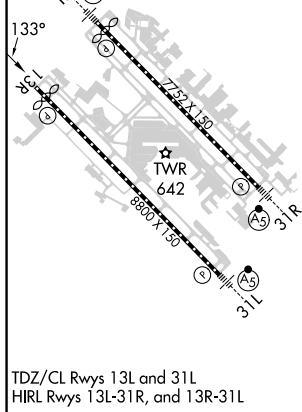
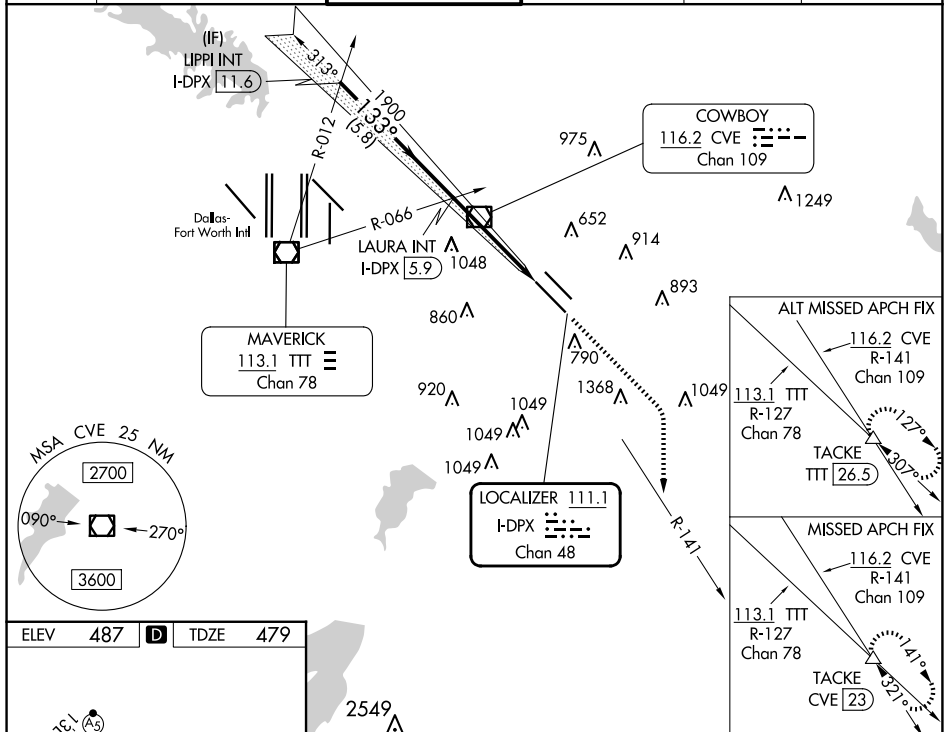
ILS or LOC RWY 13R  
DALLAS LOVE FLD (DAL)

DME required.  
RADAR required for procedure entry.

**MISSED APPROACH:** Climb to 1000 then climbing right turn to 3000 on heading 150° and CVE VOR/DME R-141 to TACKE/CVE 23 DME and hold.

**T** Simultaneous approach authorized.

D-ATIS <b>120.15</b>	LONE STAR APP CON NORTH <b>124.3 282.275</b> SOUTH <b>125.2 343.65</b>	LOVE TOWER <b>123.7 239.3</b>	GND CON <b>121.75 348.6</b>	CLNC DEL <b>127.9</b>	CPDLC
-------------------------	--	----------------------------------	--------------------------------	--------------------------	-------



LIPPI INT I-DPX <b>11.6</b> 2500 GS 3.00° TCH 47		VGSI and ILS glidepath not coincident (VGSI Angle 3.00/TCH 52). LAURA INT I-DPX <b>5.9</b> 1900		1000 ↑ 3000 hdg 150° CVE R-141	TACKE △
CATEGORY	A	B	C	D	
S-ILS 13R	679/40 200 (200-¾)				
S-LOC 13R	960/55 481 (500-1)	960-1⅓ 481 (500-1⅓)			
CIRCLING	1080-1 593 (600-1)	1140-1 653 (700-1)	1220-2 733 (800-2)	1520-3 1033 (1100-3)	

DALLAS, TEXAS  
Amdt 6C 26DEC24

32°51'N-96°51'W

DALLAS LOVE FLD (DAL)  
ILS or LOC RWY 13R

SC-2, 07 AUG 2025 to 04 SEP 2025

SC-2, 07 AUG 2025 to 04 SEP 2025