


ILS RWY 13L (SA CAT I & II)
DALLAS LOVE FLD (DAL)

<p>MALSR</p> 	<p>MISSED APPROACH: Climb to 1000 then climbing left turn to 3000 on heading 060° and CVE VOR/DME R-087 to SOLDON INT/CVE 28.9 DME and hold.</p>
---	---

MALSR

MAVERICK
113.1 TTT
Chan 78

WADES INT
I-DAL 14.4

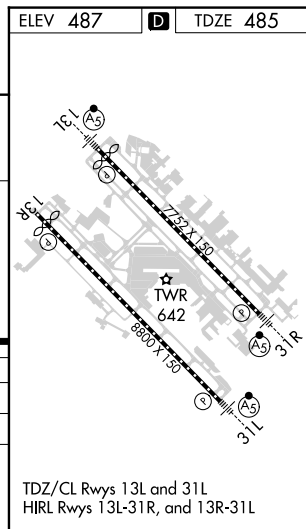
NNATE INT
I-DAL 5.7

COWBOY
116.2 CVE
Chan 109

LOCALIZER 111.5
I-DAL
Chan 52

MISSED APCH FIX

Runway	Frequency	Channel	Distance (NM)	Heading
11	113.1 TTT	Chan 78	113.1	084°
11	116.2 CVE	R-087	116.2	084°
11	119.0 R-087	R-087	119.0	084°
17	113.1 TTT	Chan 78	113.1	087°
17	116.2 CVE	R-087	116.2	087°
17	119.0 R-087	R-087	119.0	087°



SA CATEGORY I & II ILS SPECIAL AIRCREW
& AIRCRAFT CERTIFICATION REQUIRED

TDZ/CL Rwy 13L and 31L
HIRL Rwy 13L-31R, and 13R-31L

SC-2, 07 AUG 2025 to 04 SEP 2025