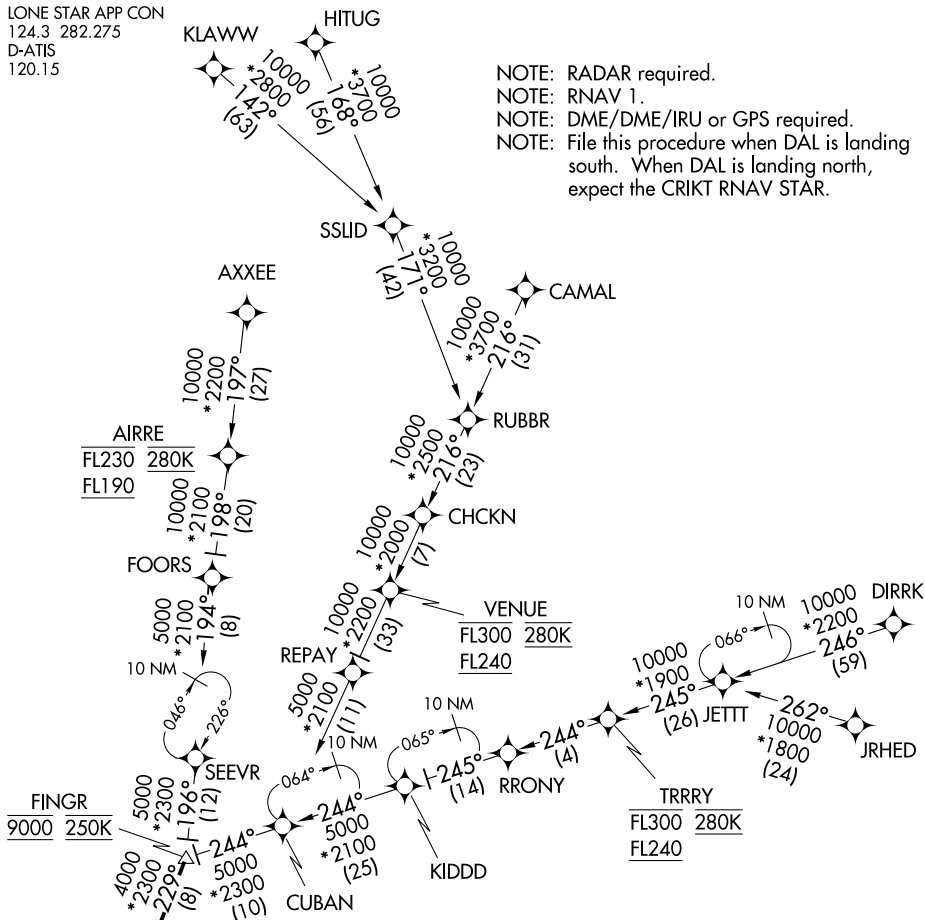


## HIBIL THREE ARRIVAL (RNAV)

LONE STAR APP CON  
124.3 282.275  
D-ATIS  
120.15

NOTE: RADAR required.  
NOTE: RNAV 1.  
NOTE: DME/DME/IRU or GPS required.  
NOTE: File this procedure when DAL is landing south. When DAL is landing north, expect the CRIK RNAV STAR.



NOTE: JRHED, RUBBR, and JETTT Transitions: ATC assigned only.  
NOTE: AXXEE and RRONY Transitions: For aircraft filing FL230 and below.  
NOTE: AIRRE Transition: For traffic at or below FL190 only.  
NOTE: Aircraft departing the Oklahoma City terminal area file and expect the AIRRE enroute transition.

## ARRIVAL ROUTE DESCRIPTION

AIRRE TRANSITION (AIRRE.HIBIL3)  
 AXXEE TRANSITION (AXXEE.HIBIL3)  
 CAMAL TRANSITION (CAMAL.HIBIL3)  
 DIRRK TRANSITION (DIRRK.HIBIL3)  
 HITUG TRANSITION (HITUG.HIBIL3)

JETT TRANSITION (JETT.HIBIL3)  
JRHD TRANSITION (JRHD.HIBIL3)  
KLAWW TRANSITION (KLAWW.HIBIL3)  
RRONY TRANSITION (RRONY.HIBIL3)  
RUBBR TRANSITION (RUBBR.HIBIL3)

From FINGR on track 229° to SLANT, then on track 232° to HIBIL, then on track 232°. Expect RADAR vectors to final approach course.

NOTE: Chart not to scale.

## HIBIL THREE ARRIVAL (RNAV)

(FINGR.HIBIL3) 31MAR16

DALLAS, TEXAS

DALLAS LOVE FLD (DAL)

SC-2, 07 AUG 2025 to 04 SEP 2025