

## DRYIE TWO ARRIVAL (RNAV)

SC-2, 07 AUG 2025 to 04 SEP 2025

## ARRIVAL ROUTE DESCRIPTION

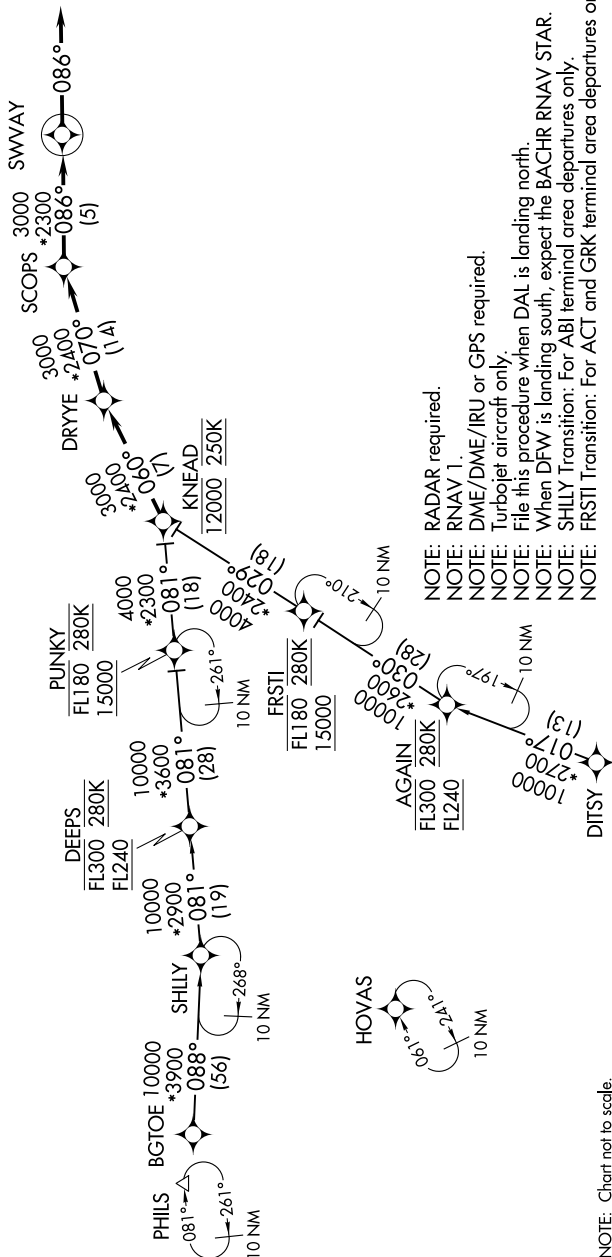
BGTOE TRANSITION (BGTOE.DRYE2)

DITSY TRANSITION (DITSY.DRYE2)

FRSTI TRANSITION (FRSTI.DRYE2)

## SHLLY TRANSITION (SHLLY.DRYYE2)

From KNEAD on track 060° to DRYE, then on track 070° to SCOPS, then on track 086° to SWVAY, then on track 086°. Expect RADAR vectors to final approach course.



NOTE: RADAR required.

NOTE: RNAV 1.

NOTE: DME/DME/IRU or GPS required.

**NOTE:** Turbojet aircraft only.

**NOTE:** File this procedure when DAL is landing north.

NOTE: When DFW is landing south, expect the BACHR RNAV STAR.

NOTE: SLLY Transition: For ABL terminal area departures only.

NOTE: FRSTI Transition: For ACT and GRK terminal area departures only.

NOTE: Chart not to scale.

SC-2. 07 AUG 2025 to 04 SEP 2025

## DRYYE TWO ARRIVAL (RNAV)

(KNEAD.DRYYE2) 22JUN17

DALLAS, TEXAS  
DALLAS LOVE FLD (DAL)