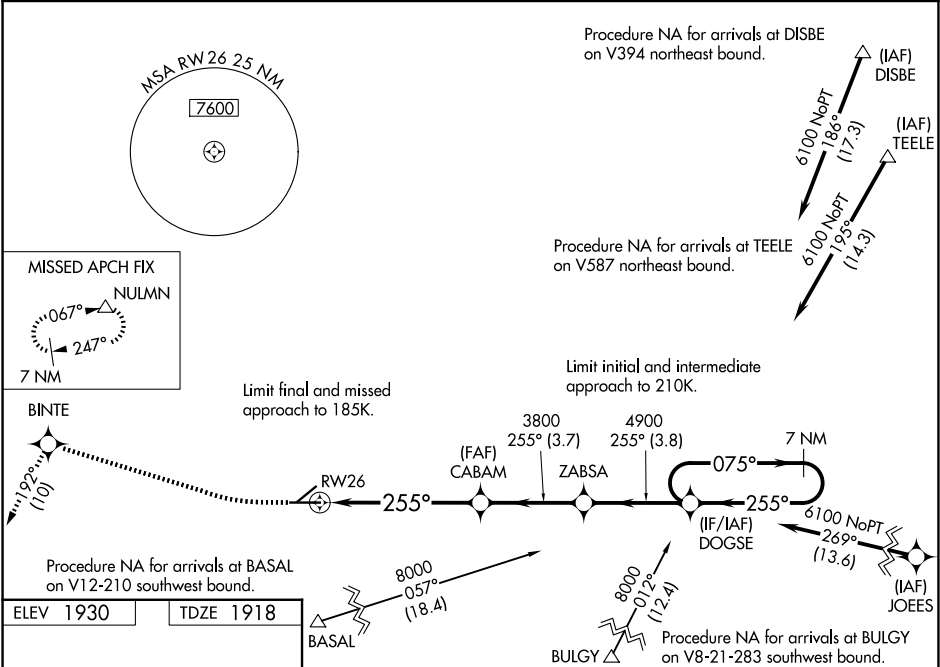


WAAS CH 72813 W26A	APP CRS 255°	Rwy Ldg TDZE 1918 Apt Elev 1930
--	------------------------	---

RNAV (GPS) RWY 26
BARSTOW-DAGGETT (DAG)

RNP APCH. ▼ For uncompensated Baro-VNAV systems, LNAV/VNAV NA below -4°C or above 54°C. Circling NA for Cat D south of Rwy 8-26. Rwy 26 helicopter visibility reduction below ¾ SM NA. ⚠ #Missed approach requires a minimum climb of 220 feet per NM to 8000.	MISSED APPROACH: Climb to 2600 on heading 255° then climb to 8000 direct BINTE and on track 192° to NULMN and hold, continue climb-in-hold to 8000.
--	---

ASOS 132.175	LOS ANGELES CENTER 132.5 284.7	UNICOM 123.0 (CTAF) 0
------------------------	--	---------------------------------



6402 X 150	0.3% UP	0.3% UP
6402	5123 X 100	26
255°		

MIRL Rwy 4-22 and 8-26 0

SW-3, 07 AUG 2025 to 04 SEP 2025

SW-3, 07 AUG 2025 to 04 SEP 2025