

WAAS CH 82529 W03A	APP CRS 026°	Rwy Idg 5465 TDZE 1503 Apt Elev 1503
--	------------------------	---

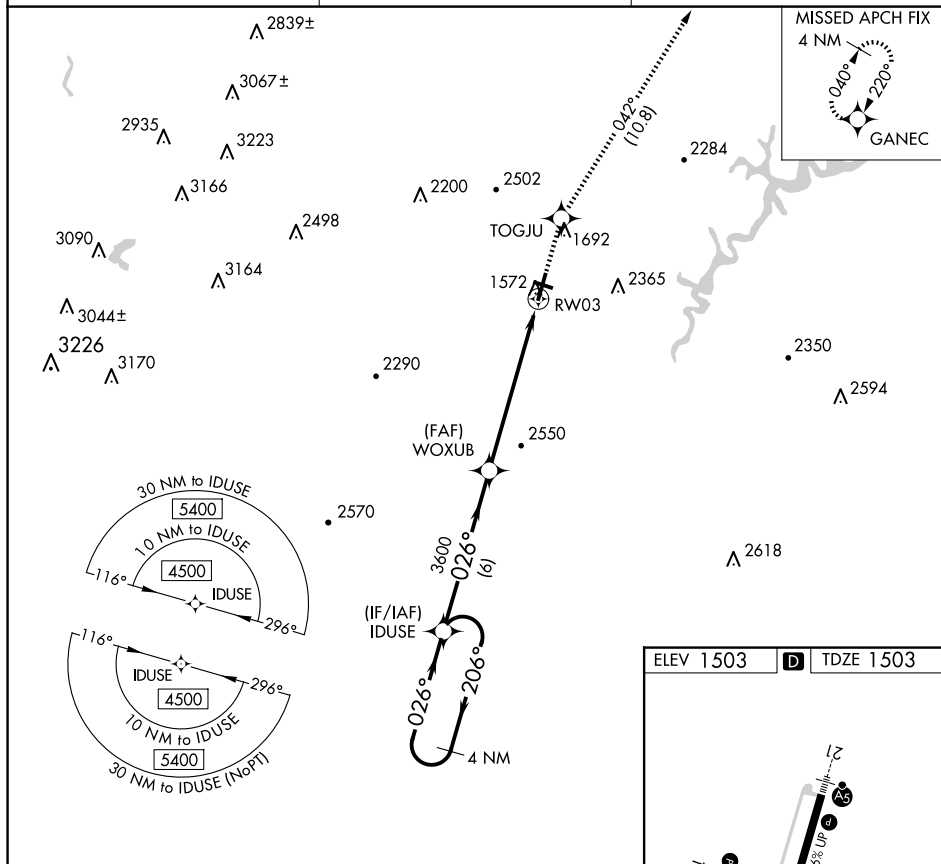
RNAV (GPS) Z RWY 3

ALTOONA/BLAIR COUNTY (A00)

NA Rwy 3 helicopter visibility reduction below $\frac{3}{4}$ SM NA. DME/DME RNP-0.3 NA. When local altimeter setting not received, use Bedford County altimeter setting and increase all DA 84 feet, and increase all visibilities $\frac{3}{8}$ mile.

MISSED APPROACH: Climb to 5000 direct TOGJU and on track 042° to GANEC and hold, continue climb-in-hold to 5000.

ASOS 127.125	JOHNSTOWN APP CON ★ 121.2 299.2	CTAF 123.60
------------------------	---	-----------------------



VGSB and RNAV glidepath not coincident
(VGSB Angle 3.00/TCH 43).

4 NM Holding Pattern IDUSE

4500 ← 206°
→ 026°

GP 3.00° TCH 55

WQXUB 3600

RW03

3600

6 NM 6.4 NM

CATEGORY	A	B	C	D
LPV DA		1828-1	325 (400-1)	

TOGJU

GANEK

tr 042°

HIRL Rwy 3-21
MIRL Rwy 12-30
REIL Rws 3, 12, and 30