

WAAS CH <b>82030</b> <b>W03B</b>	APP CRS <b>041°</b>	Rwy Idg TDZE <b>1503</b> Apt Elev <b>1503</b>
--	------------------------	---

RNAV (GPS) Y RWY 3

ALTOONA/BLAIR COUNTY (A00)

RNP APCH - GPS.

▼

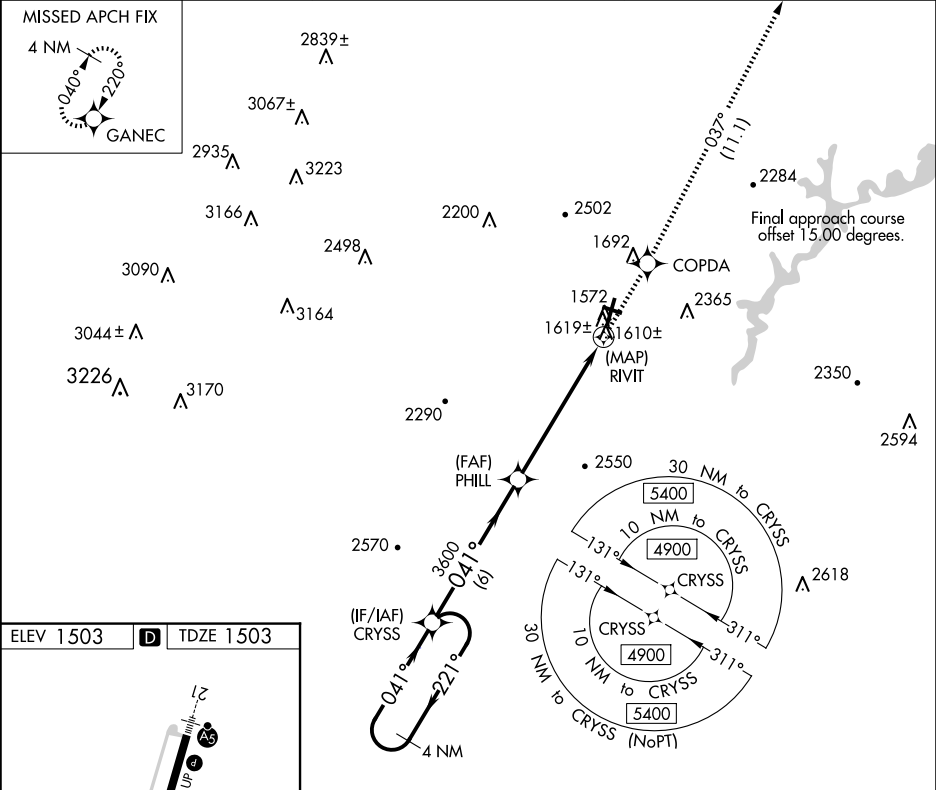
When local altimeter setting not received, use Bedford County altimeter setting, increase all MDA 100 feet. Increase LNAV and LP Cat C/D visibilities ¾ SM and Circling Cat A ¼ SM.

▲

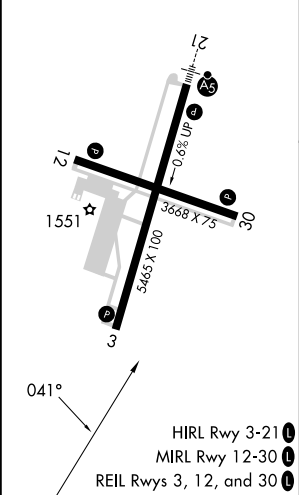
Rwy 3, helicopter visibility reduction below ¾ SM NA. Circling NA to Rwys 12 and 30.  
VDP NA when using Bedford County altimeter setting.

MISSED APPROACH: Climb to 5000 direct COPDA on track 037° to GANEC and hold, continue climb-in-hold to 5000.

ASOS <b>127.125</b>	JOHNSTOWN APP CON ★ <b>121.2 299.2</b>	CTAF <b>123.60</b>
------------------------	---	-----------------------



ELEV 1503	<b>D</b>	TDZE 1503
-----------	----------	-----------



4 NM Holding Pattern		CRYSS	5000	COPDA	tr 037°	GANEC
4900		221°	041°	041°	0.6 NM to RIVIT	RIVIT
3600		3.00°	TCH 43	0.6	0.5	
6 NM		5.4 NM	0.6	0.5		
CATEGORY	A	B	C	D		
LP MDA	1860-1 357 (400-1)					
LNAV MDA	1880-1 377 (400-1)					
CIRCLING	2240-1 737 (800-1)	2240-1¼ 737 (800-1¼)	2800-3 1297 (1300-3)	2840-3 1337 (1400-3)		