

CORPUS CHRISTI, TEXAS

# VOR/DME or TACAN Y RWY 13R

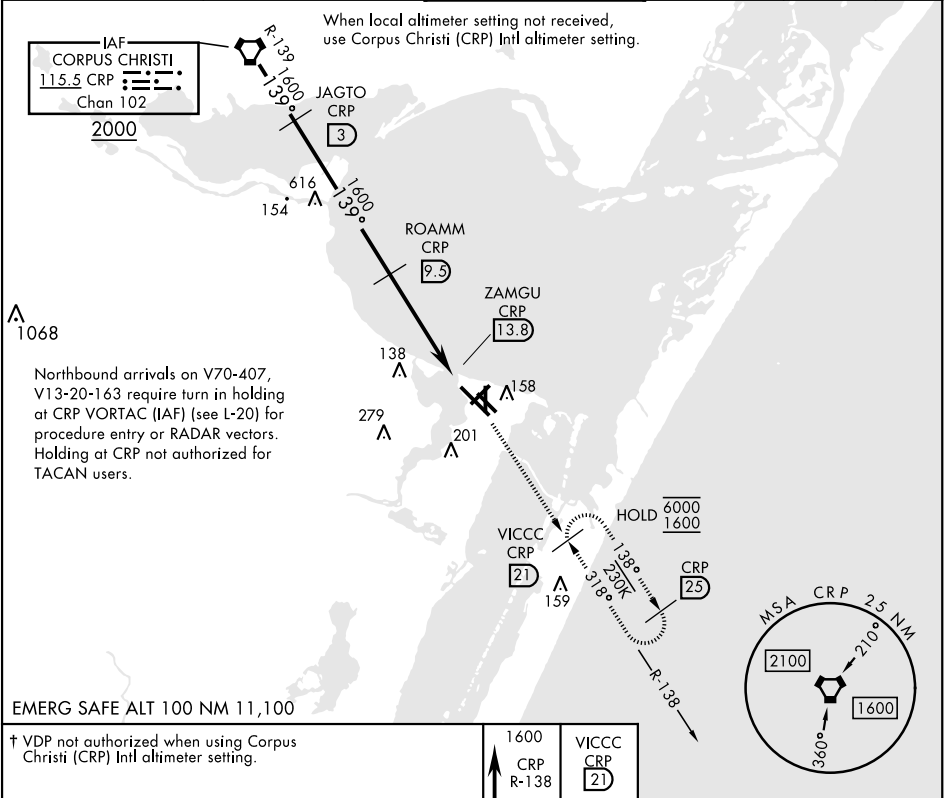
VORTAC CRP <b>115.5</b> Chan <b>102</b>	APCH CRS <b>139°</b>	Rwy Idg TDZE Arpt Elev <b>8001</b> <b>13</b> <b>18</b>
---	-------------------------	---

[USN]

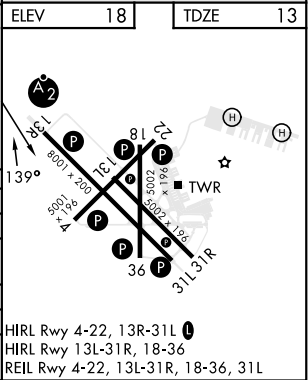
CORPUS CHRISTI NAS (TRUAX FLD) (KNGP)

<b>▼</b> * When ALS inop, increase CAT AB vis to 1 mile, CAT CD vis to 1½ miles. ** When ALS inop, increase CAT AB vis to 1 mile, CAT CD vis to 1½ miles.	SALSF 	MISSED APPROACH: Climb to 1600 on CRP VORTAC R-138 to VICCC and hold.
--	-----------	---

ATIS ★ <b>127.9 290.9</b>	APP CON <b>128.675 343.75</b>	NAVY CORPUS TOWER ★ <b>134.85 0 340.2</b>	GND CON <b>118.7 257.85</b>	CLNC DEL <b>314.3</b>	ASR/ PAR
------------------------------	----------------------------------	--	--------------------------------	--------------------------	----------



CATEGORY	A		B		C		D	
S-13R *	420-¾ 407 (500-¾)		420-1 407 (500-1)		580-2			
CIRCLING	442 (500-1)		462 (500-1)		502 (600-1½)		562 (600-2)	
CORPUS CHRISTI (CRP) INTL ALTIMETER SETTING								
S-13R **	460-¾ 447 (500-1¾)		460-1 447 (500-1)		620-2			
CIRCLING	500-1 482 (500-1)		522 (600-1½)		602 (700-2)			



CORPUS CHRISTI, TEXAS

27°42'N-97°17'W

CORPUS CHRISTI NAS (TRUAX FLD) (KNGP)

Amdd 2 30NOV23

# VOR/DME or TACAN Y RWY 13R

SC-3, 07 AUG 2025 to 04 SEP 2025

SC-3, 07 AUG 2025 to 04 SEP 2025