

TACAN Z RWY 31L

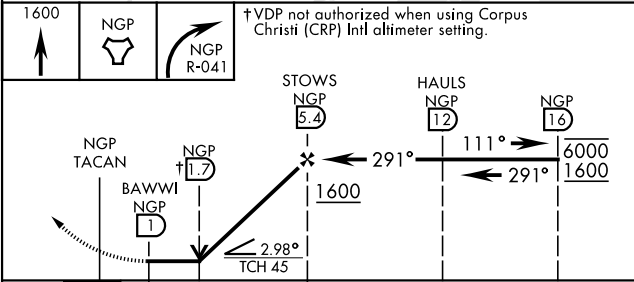
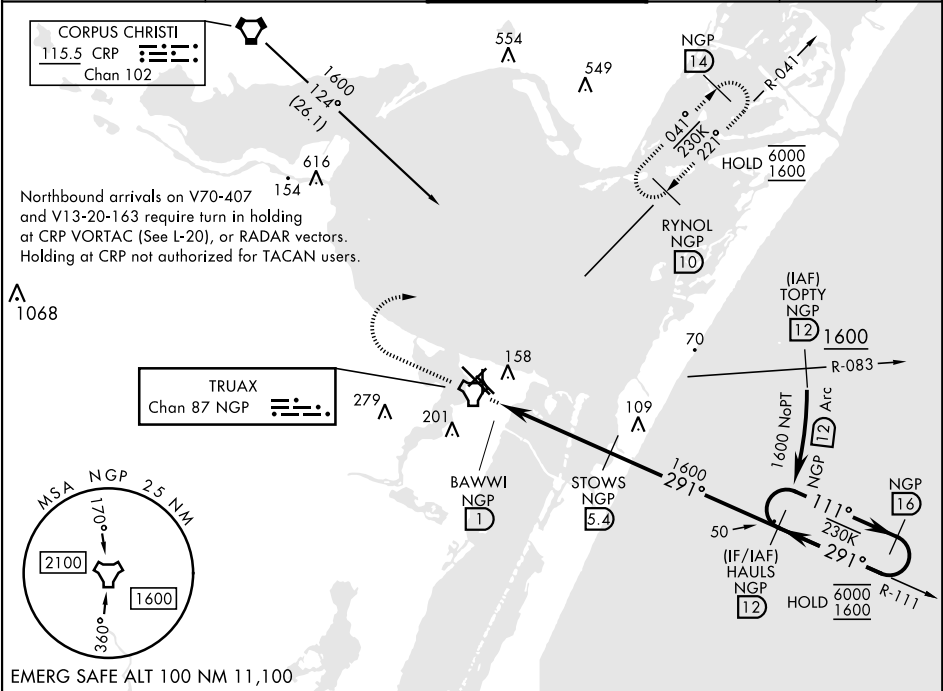
TACAN	NGP	APCH CRS	Rwy Idg
Chan 87	291°	291°	8001
		TDZE	17
		Arpt Elev	18

[USN]

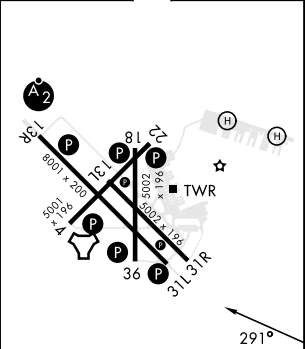
CORPUS CHRISTI NAS (TRUAX FLD) (KNGP)

When local altimeter setting not received, use Corpus Christi (CRP) Intl altimeter setting.	MISSED APPROACH: Climb to 1600 direct NGP TACAN and turn right to intercept R-041 to RYNOL and hold.
---	--

ATIS ★ 127.9 290.9	APP CON 128.675 343.75	NAVY CORPUS TOWER ★ 134.85 340.2	GND CON 118.7 257.85	CLNC DEL 314.3	ASR/ PAR
-----------------------	---------------------------	-------------------------------------	-------------------------	-------------------	-------------



ELEV 18	TDZE 17
---------	---------



CATEGORY	A	B	C	D
S-31L	420-1 403 (500-1)	420-1½ 403 (500-1½)	420-1½ 403 (500-1½)	420-1½ 403 (500-1½)
CIRCLING	460-1 442 (500-1)	480-1 462 (500-1)	520-1½ 502 (600-1½)	580-2 562 (600-2)
CORPUS CHRISTI (CRP) INTL ALTIMETER SETTING				
S-31L	460-1 443 (500-1)	460-1½ 443 (500-1½)	540-1½ 620-2	540-1½ 620-2
CIRCLING	500-1 482 (500-1)	522 (600-1½)	602 (700-2)	602 (700-2)

TACAN Z RWY 31L

SC-3, 07 AUG 2025 to 04 SEP 2025

SC-3, 07 AUG 2025 to 04 SEP 2025