

TACAN Z RWY 13R

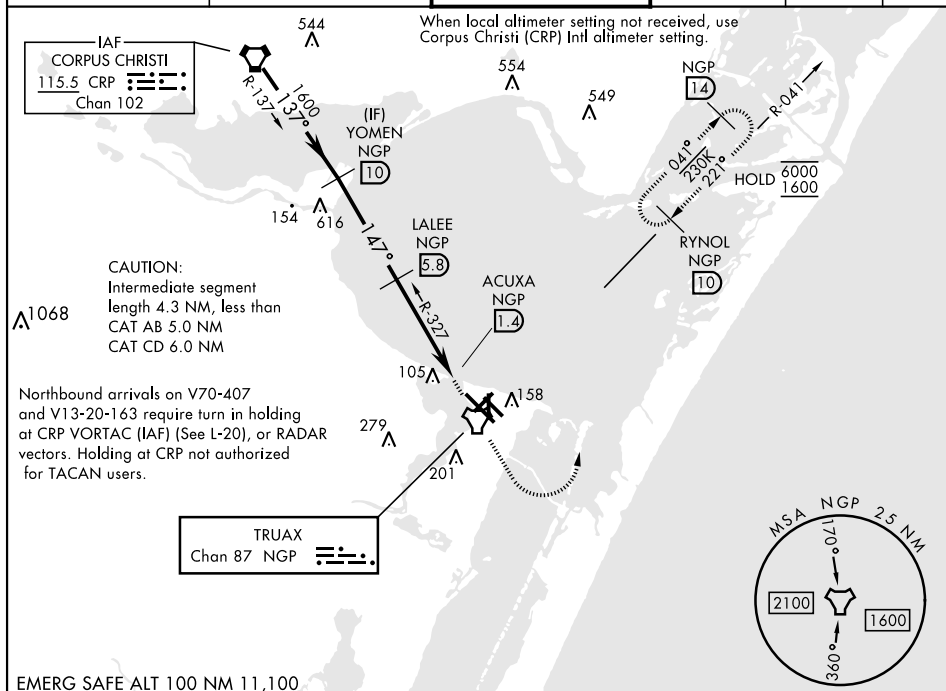
TACAN NGP Chan 87	APCH CRS 147°	Rwy Idg 8001 TDZE 13 Arpt Elev 18
-----------------------------	-------------------------	--

[USN]

CORPUS CHRISTI NAS (TRUAX FLD) (KNGP)

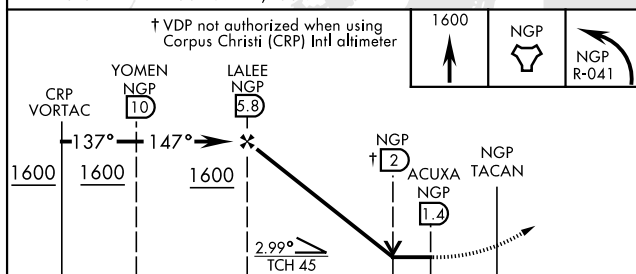
<p>▼ * When ALS inop, increase CAT AB vis to 1 mile, CAT CD vis to 1 1/8 miles.</p>	<p>SALSF A2</p>	<p>MISSED APPROACH: Climb to 1600 direct NGP TACAN and turn left to intercept R-041 to RYNOL and hold.</p>
---	---------------------	--

ATIS ★ 127.9 290.9	APP CON 128.675 343.75	NAVY CORPUS TOWER ★ 134.85 0 340.2	GND CON 118.7 257.85	CLNC DEL 314.3	ASR/ PAR
-----------------------	---------------------------	---------------------------------------	-------------------------	-------------------	-------------

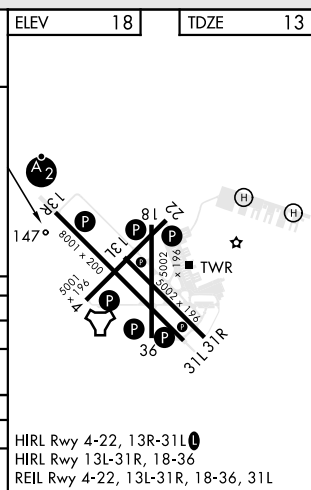


EMERG SAFE ALT 100 NM 11,100

† VDP not authorized when using Corpus Christi (CRP) Intl altimeter



		4.4 NM		0.5	
CATEGORY	A	B	C	D	
S-13R *	400- $\frac{3}{4}$	387 (400- $\frac{3}{4}$)	400- $\frac{7}{8}$	387 (400- $\frac{7}{8}$)	
C CIRCLING	460-1	480-1	520-1 $\frac{1}{2}$	580-2	
	442 (500-1)	462 (500-1)	502 (600-1 $\frac{1}{2}$)	562 (600-2)	
CORPUS CHRISTI (CRP) INTL ALTIMETER SETTING					
S-13R *	420- $\frac{3}{4}$	407 (500- $\frac{3}{4}$)	420-1	407 (500-1)	
C CIRCLING	500-1	482 (500-1)	540-1 $\frac{1}{2}$	620-2	
			522 (600-1 $\frac{1}{2}$)	602 (700-2)	



CORPUS CHRISTI, TEXAS

27°42'N-97°17'W

CORPUS CHRISTI NAS (TRUAX FLD) (KNGP)

Amdt 2 30NOV23

TACAN Z RWY 13R

SC-3, 07 AUG 2025 to 04 SEP 2025

SC-3, 07 AUG 2025 to 04 SEP 2025