

RNAV (GPS) RWY 36

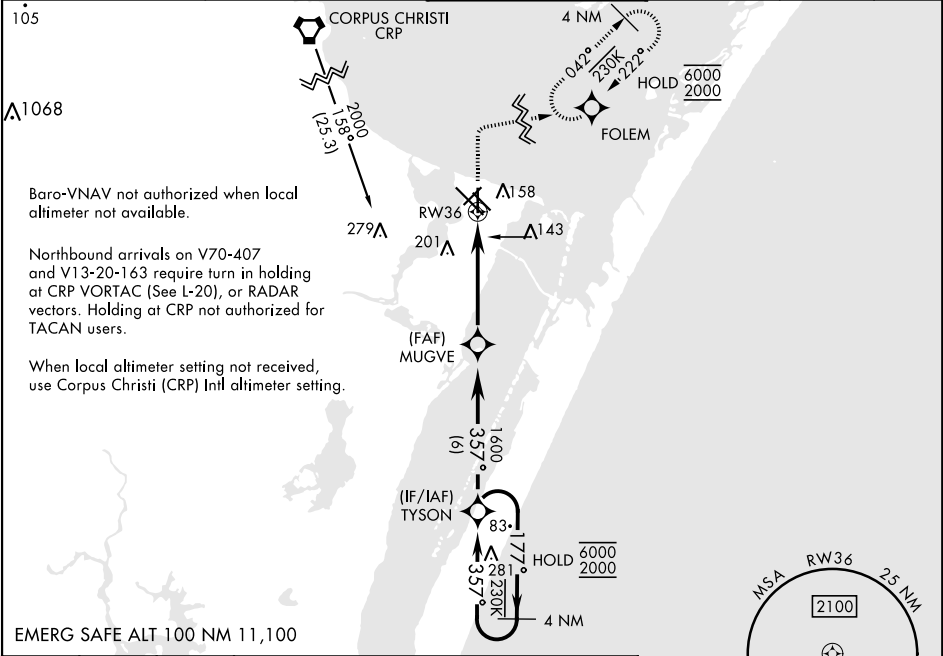
APCH CRS	Rwy Idg	5002
357°	TDZE	18
	Arpt Elev	18

[USN]

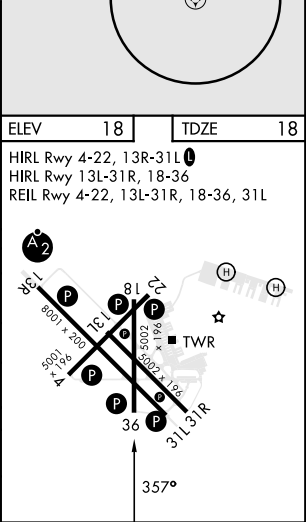
CORPUS CHRISTI NAS (TRUAX FLD) (KNGP)

RNP APCH	MISSED APPROACH: Climb to 600, then climbing right turn to 2000 direct FOLEM and hold.
▼ For uncompensated Baro-VNAV systems, LNAV/VNAV NA below -15° C (5° F) or above 54° C (129° F).	

ATIS ★ 127.9 290.9	APP CON 128.675 343.75	NAVY CORPUS TOWER ★ 134.85 0 340.2	GND CON 118.7 257.85	CLNC DEL 314.3	ASR/ PAR
-----------------------	---------------------------	---------------------------------------	-------------------------	-------------------	-------------



600	2000	FOLEM	VDP not authorized when using Corpus Christi (CRP) Intl altimeter setting.	4 NM Holding Pattern
↑	↪	⊙		
EMERG SAFE ALT 100 NM 11,100				
TYSON				
MUGVE				
RW36				
4.8 NM				
1600				
357°				
177°				
6000				
2000				
GP 3.00°				
TCH 50				
CATEGORY	A	B	C	D
LNAV MDA	400-1	382 (400-1)	400-1½	382 (400-1½)
LNAV/VNAV DA	400-1½	382 (400-1½)		
CIRCLING	460-1 442 (500-1)	480-1 462 (500-1)	520-1½ 502 (600-1½)	580-2 562 (600-2)
CORPUS CHRISTI (CRP) INTL ALTIMETER SETTING				
LNAV MDA	440-1	422 (500-1)	440-1¼	422 (500-1¼)
CIRCLING	500-1	482 (500-1)	540-1½ 522 (600-1½)	620-2 602 (700-2)



RNAV (GPS) RWY 36