

RNAV (GPS) RWY 31R

CORPUS CHRISTI NAS (TRUAX FLD) (KNGP)

[USN]

APCH CRS	Rwy Idg	5002
312°	TDZE	18
	Arpt Elev	18

RNP APCH

▼ For uncompensated Baro-VNAV systems, LNAV/VNAV NA below -15°C (5°F) or above 54°C (129°F).

MISSED APPROACH: Climb to 600, then climbing right turn to 2000 direct UBOAT and hold.

ATIS ★
127.9 290.9

APP CON
128.675 343.75

NAVY CORPUS TOWER ★
134.85 340.2

GND CON	
118.7	257.85

CLNC DE
314.3ASR/
PAR

CORPUS CHRISTI CRP

HO

154

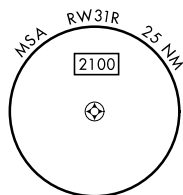
616

2000

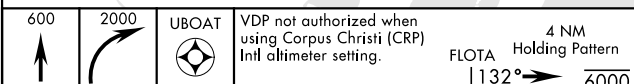
3000

2600

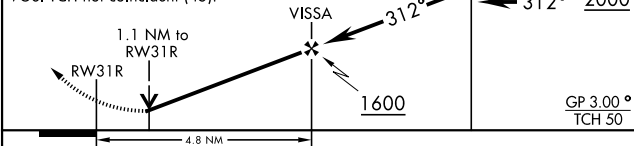
Northbound arrivals on V70-407 and V13-20-163 require turn in holding at CRP VORTAC (See L-20), or RADAR vectors. Holding at CRP not authorized for TACAN users.

 Λ_{1068} 

EMERG SAFE ALT 100 NM 11,100



VGS| TCH not coincident (45).



CATEGORY	A	B	C	D
LNAV/VNAV DA	411-1½	393	(400-1½)	
LNAV MDA	420-1	402 (500-1)	420-1½	402 (500-1½)
C CIRCLING	460-1 442 (500-1)	480-1 462 (500-1)	520-1½ 502 (600-1½)	580-2 562 (600-2)
CORPUS CHRISTI (CRP) INTL ALTIMETER SETTING				
LNAV MDA	460-1	442 (500-1)	460-1½	442 (500-1½)
C CIRCLING	500-1	482 (500-1)	540-1½ 522 (600-1½)	620-2 602 (700-2)

CORPUS CHRISTI, TEXAS

27°42'N-97°17'W

CORPUS CHRISTI NAS (TRUAX FLD) (KNGP)

Amdt 2 25JAN24

RNAV (GPS) RWY 31R

