

CORPUS CHRISTI, TEXAS

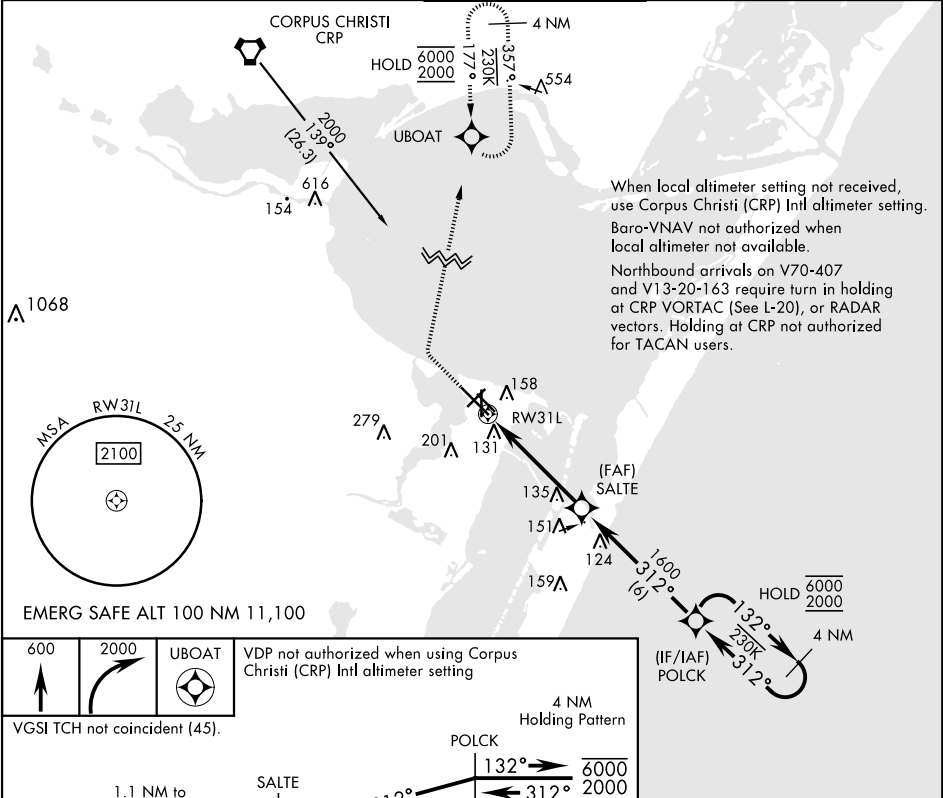
APCH CRS	Rwy Idg	8001
312°	TDZE	17
	Arprt Elev	18

[USN]

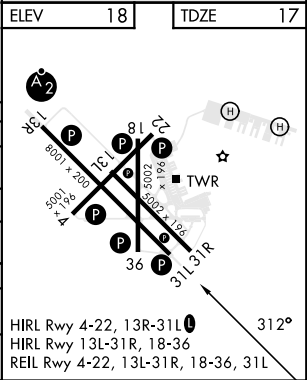
RNAV (GPS) RWY 31L

CORPUS CHRISTI NAS (TRUAX FLD) (KNGP)

RNP APCH			MISSED APPROACH: Climb to 600, then climbing right turn to 2000 direct UBOAT and hold.		
▼ For uncompensated Baro-VNAV systems, LNAV/VNAV NA below -15° C (5° F) or above 54° C (129° F).					
ATIS ★	APP CON	NAVY CORPUS TOWER ★	GND CON	CLNC DEL	ASR/ PAR
127.9 290.9	128.675 343.75	134.85 340.2	118.7 257.85	314.3	



		GP 3.00° TCH 50		
CATEGORY	A	B	C	D
LNAV/VNAV DA	412-1½		395	(400-1½)
LNAV MDA	420-1	403 (500-1)	420-1½	403 (500-1½)
C CIRCLING	460-1 442 (500-1)	480-1 462 (500-1)	520-1½ 502 (600-1½)	580-2 562 (600-2)
CORPUS CHRISTI (CRP) INTL ALTIMETER SETTING				
LNAV MDA	460-1	443 (500-1)	460-1½	443 (500-1½)
C CIRCLING	500-1	482 (500-1)	540-1½ 522 (600-1½)	620-2 602 (700-2)



CORPUS CHRISTI, TEXAS
Amdt 2 30NOV23

27°42'N-97°17'W

RNAV (GPS) RWY 31L

CORPUS CHRISTI NAS (TRUAX FLD) (KNGP)