

APCH CRS	Rwy Idg	5001
222°	TDZE	15
	Arpt Elev	18

[USN]

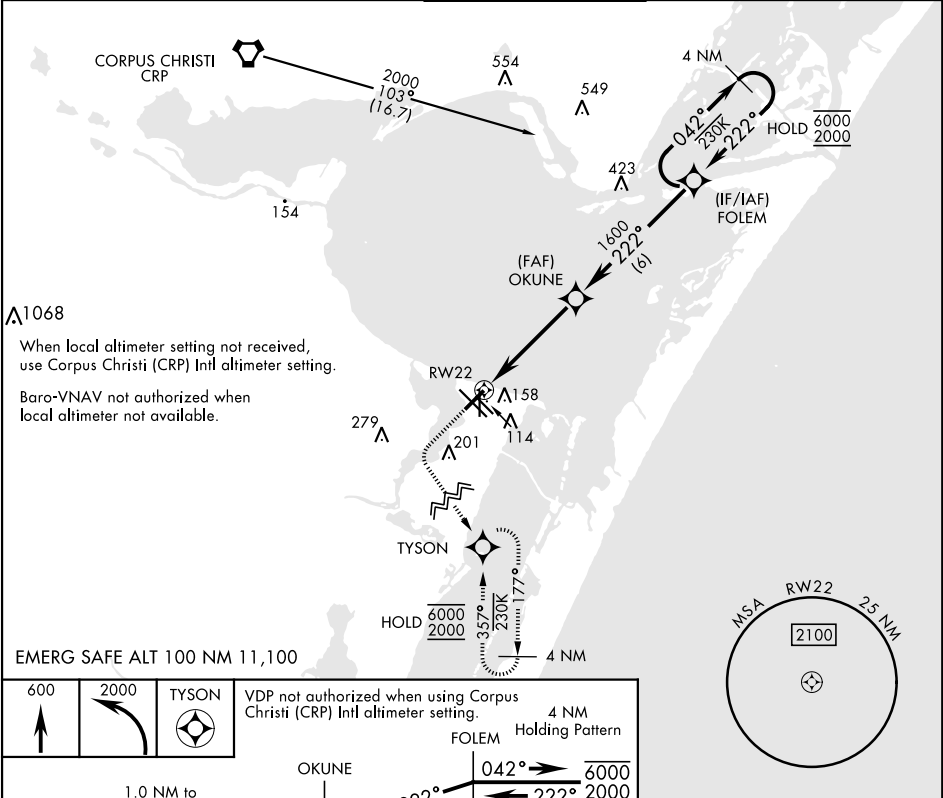
CORPUS CHRISTI NAS (TRUAX FLD) (KNGP)

RNP APCH

For uncompensated Baro-VNAV systems, LNAV/VNAV NA below -15° C (5° F) or above 54° C (129° F).

MISSED APPROACH: Climb to 600, then climbing left turn to 2000 direct TYSON and hold.

ATIS ★ 127.9 290.9	APP CON 128.675 343.75	NAVY CORPUS TOWER ★ 134.85 0 340.2	GND CON 118.7 257.85	CLNC DEL 314.3	ASR/ PAR
-----------------------	---------------------------	---------------------------------------	-------------------------	-------------------	-------------



EMERG SAFE ALT 100 NM 11,100

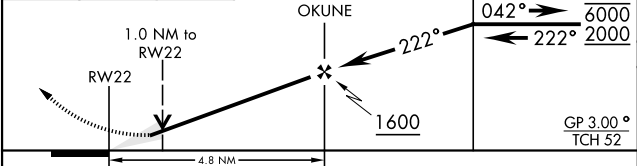
600

2000

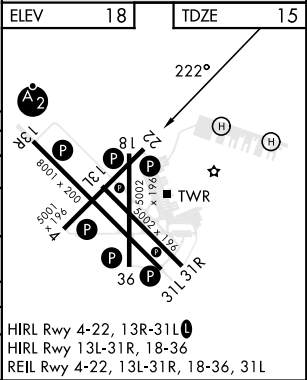
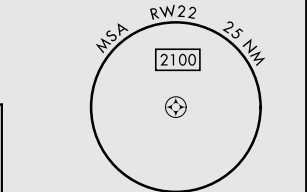
TYSON

VDP not authorized when using Corpus Christi (CRP) Intl altimeter setting.

4 NM Holding Pattern



CATEGORY	A	B	C	D
LNAV MDA	380-1	365	(400-1)	
LNAV/VNAV DA	320-7/8	305	(400-7/8)	380-1 365 (400-1)
CIRCLING	460-1 422 (500-1)	480-1 462 (500-1)	520-1 1/2 502 (600-1 1/2)	580-2 562 (600-2)
CORPUS CHRISTI (CRP) INTL ALTIMETER SETTING				
LNAV MDA	400-1	385 (400-1)	400-1 1/8	385 (400-1 1/8)
CIRCLING	500-1	482 (500-1)	540-1 1/2 522 (600-1 1/2)	620-2 602 (700-2)



SC-3, 07 AUG 2025 to 04 SEP 2025

SC-3, 07 AUG 2025 to 04 SEP 2025