

RNAV (GPS) RWY 18

APCH CRS 177°	Rwy Idg 5002 TDZE 18 Arpt Elev 18
-------------------------	--

[USN]

CORPUS CHRISTI NAS (TRUAX FLD) (KNGP)

RNP APCH

T For uncompensated Baro-VNAV systems, LNAV/VNAV NA below -15°C (5°F) or above 54°C (129°F).

MISSED APPROACH: Climb to 2000 direct TYSON and hold.

ATIS ★

127.9 290.9

APP CON

128.675 343.75

NAVY CORPUS TOWER ★

9 290.9	128.675 343.75	134.85 340.2
---------	----------------	--------------

GND Co

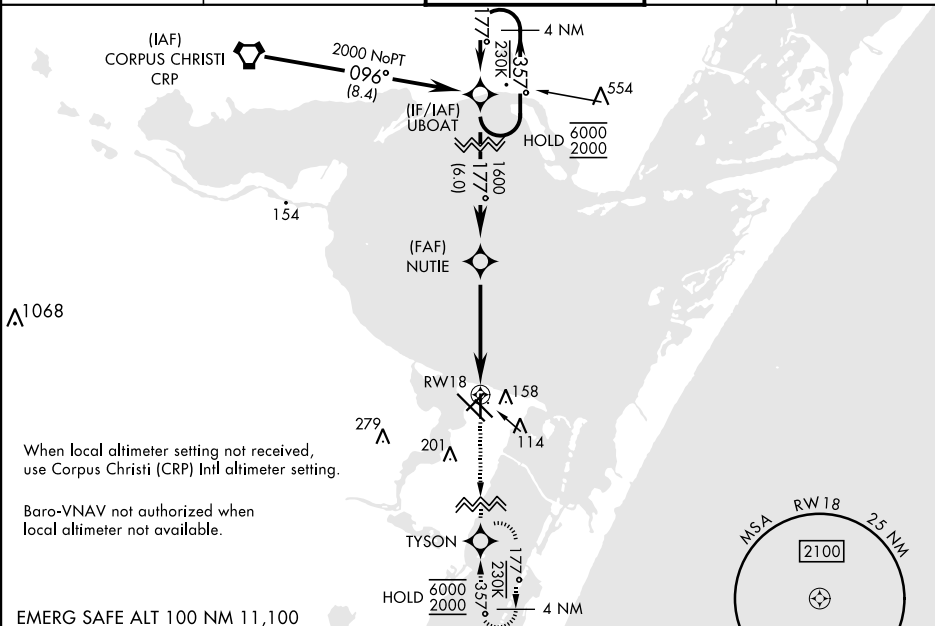
118.7 257.85

CLINC DEF

314.3

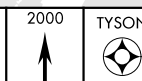
ASD/

PAR

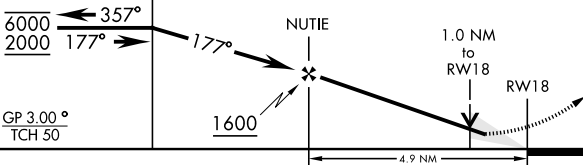




EMERG SAFE ALT 100 NM 11,100

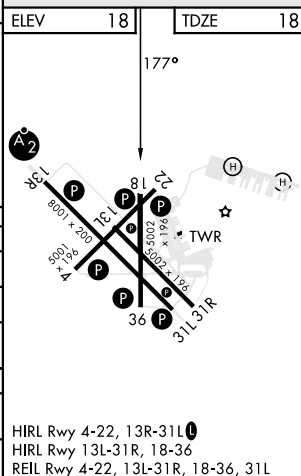
VDP not authorized when using Corpus Christi (CRP) Intl altimeter setting.

4 NM
Holding Pattern

UBOAT



CATEGORY	A	B	C	D
LNNAV/VNAV DA	268- $\frac{3}{4}$	250	(300- $\frac{3}{4}$)	275- $\frac{3}{4}$ 257 (300- $\frac{3}{4}$)
LNNAV MDA	380-1 362 (400-1)			
 CIRCLING	460-1 442 (500-1)	480-1 462 (500-1)	520-1½ 502 (600-1½)	580-2 562 (600-2)
CORPUS CHRISTI (CRP) INTL ALTIMETER SETTING				
LNNAV MDA	400-1	382 (400-1)	400-1½	382 (400-1½)
 CIRCLING	500-1	482 (500-1)	540-1½ 522 (600-1½)	620-2 602 (700-2)



CORPUS CHRISTI, TEXAS

27°42'N-97°17'W

CORPUS CHRISTI NAS (TRUAX FLD) (KNGP)

Amdt 2 30NOV23

RNAV (GPS) RWY 18

SC-3, 07 AUG 2025 to 04 SEP 2025