

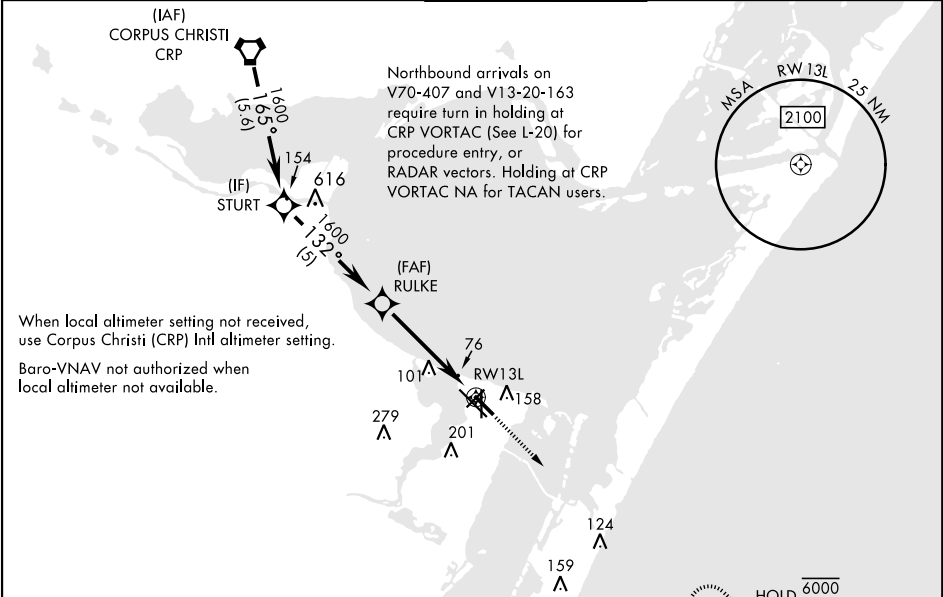
RNAV (GPS) RWY 13L

APCH CRS	Rwy Idg	5002
132°	TDZE	18
	Arpt Elev	18

[USN]

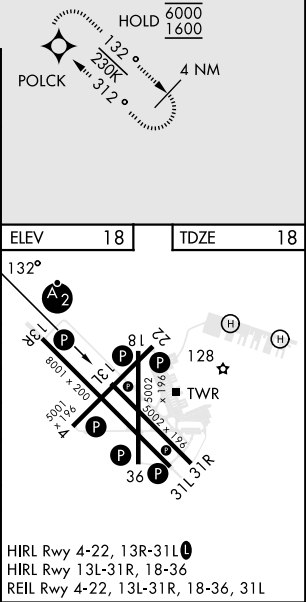
CORPUS CHRISTI NAS (TRUAX FLD) (KNGP)

RNP APCH		MISSED APPROACH: Climb to 600, then climbing right turn to 1600 direct POLCK and hold.	
▼ For uncompensated Baro-VNAV systems, LNAV/VNAV NA below -15° C (5° F) or above 54° C (129° F).			
ATIS ★	APP CON	NAVY CORPUS TOWER ★	GND CON
127.9 290.9	128.675 343.75	134.85 340.2	118.7 257.85
			CLNC DEL
			314.3
			ASR/ PAR



EMERG SAFE ALT 100 NM 11,100

VDP not authorized when using Corpus Christi (CRP) Intl altimeter setting.				
<div><div>600</div><div>1600</div><div>POLCK</div></div>				
CATEGORY	A	B	C	D
LNAV/VNAV DA	268-1		250 (300-1)	
LNAV MDA	400-1	382 (400-1)	400-1½	382 (400-1½)
CIRCLING	440-1	480-1	520-1½	580-2
	442 (500-1)	462 (500-1)	502 (600-1½)	562 (600-2)
CORPUS CHRISTI (CRP) INTL ALTIMETER SETTING				
LNAV MDA	420-1	402 (500-1)	420-1½	402 (500-1½)
CIRCLING	500-1	482 (500-1)	540-1½	620-2
			522 (600-1½)	602 (700-2)



RNAV (GPS) RWY 13L

SC-3, 07 AUG 2025 to 04 SEP 2025

SC-3, 07 AUG 2025 to 04 SEP 2025