


CORPUS CHRISTI, TEXAS

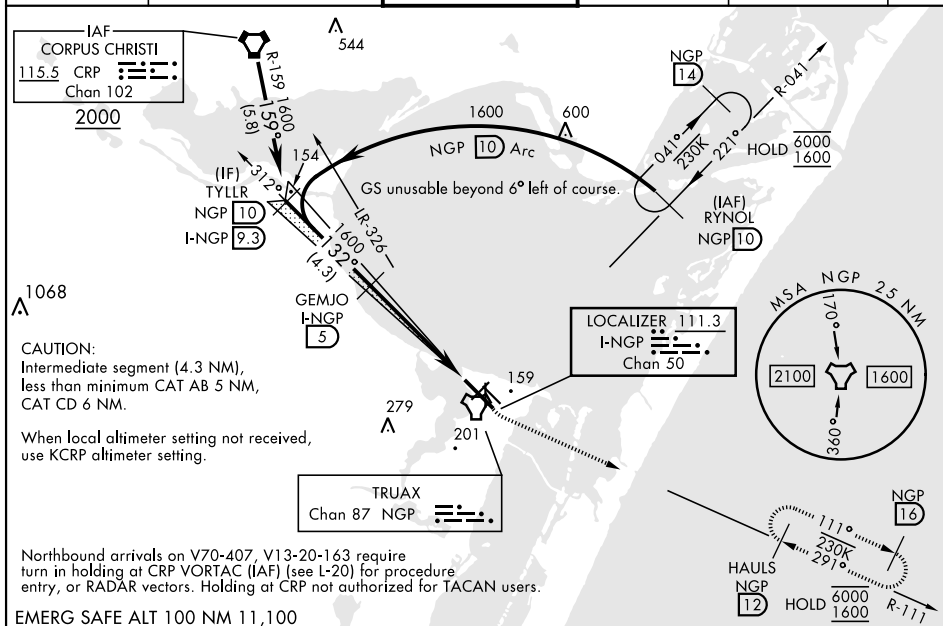
LOC/DME I-NGP <b>111.3</b> Chan <b>50</b>	APCH CRS <b>132°</b>	Rwy Idg <b>8001</b> TDZE <b>13</b> Arpt Elev <b>18</b>
-------------------------------------------------	-------------------------	--------------------------------------------------------------

[USN]

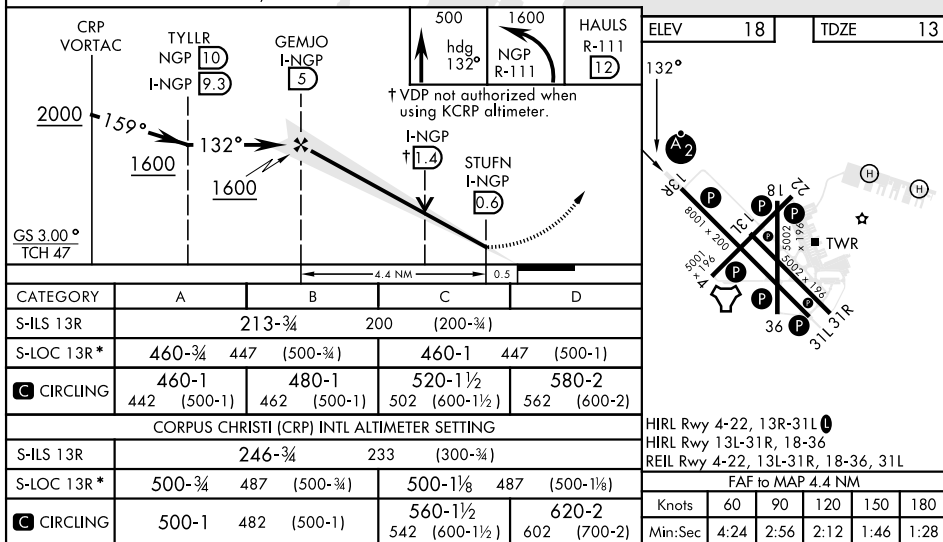
## ILS Z or LOC Z RWY 13R

CORPUS CHRISTI NAS (TRUAX FLD) (KNGP)

DME required		SALSF 	MISSED APPROACH: Climb to 500 hdg 132°, then climbing left turn to 1600 and intercept NGP TACAN R-111 to HAULS and hold. Continue climb-in-hold to 1600.			
▼ *When ALS inop, increase CAT AB vis to 1 mile, CAT CD to 1¾ miles.						
ATIS ★ 127.9 290.9	APP CON 128.675 343.75	NAVY CORPUS TOWER ★ 134.85 0 340.2	GND CON 118.7 257.85	CLNC DEL 314.3	ASR/ PAR	



EMERG SAFE ALT 100 NM 11.100



CORPUS CHRISTI, TEXAS

27°42'N-97°17'W

CORPUS CHRISTI NAS (TRUAX FLD) (KNGP)

Amdt 1 28NOV24

## ILS Z or LOC Z RWY 13R