

CORPUS CHRISTI, TEXAS

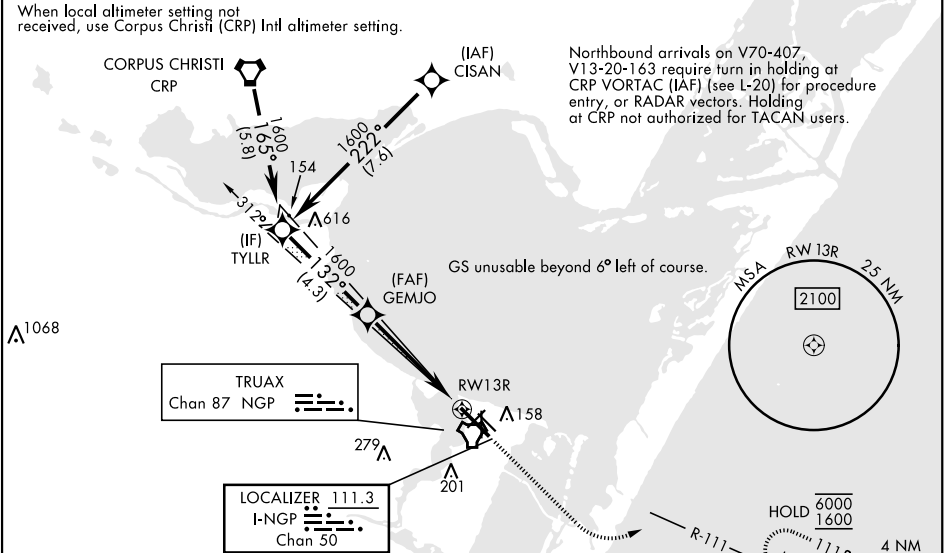
LOC/DME I-NCP 111.3 Chan 50	APCH CRS 132°	Rwy Idg TDZE Arpt Elev 8001 13 18
---	-------------------------	---

ILS Y or RNAV (GPS) RWY 13R

[USN] CORPUS CHRISTI NAS (TRUAX FLD) (KNGP)

RNP APCH for LNAV. RNAV1 - GPS for ILS.	SALSF 	MISSED APPROACH: Climb to 600, then climbing left turn to 1600 direct HAULS and hold.
*When ALS inop, increase CAT AB vis to 1 mile; CAT CD vis to 1½ miles.		

ATIS★ 127.9 290.9	APP CON 128.675 343.75	NAVY CORPUS TOWER★ 134.85 340.2	GND CON 118.7 257.85	CLNC DEL 314.3	ASR/ PAR
-----------------------------	----------------------------------	---	--------------------------------	--------------------------	-------------



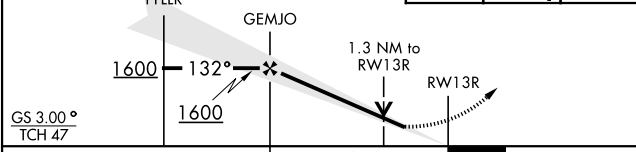
EMERG SAFE ALT 100 NM 11,100

VDP not authorized when using Corpus Christi (CRP) Intl altimeter setting

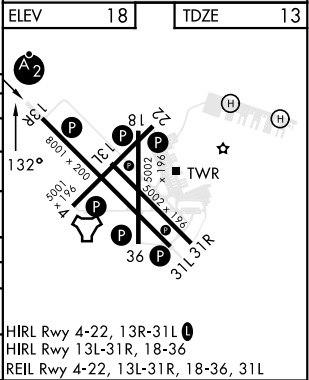
600

1600

HAULS NGP 12



CATEGORY	A	B	C	D
S-ILS 13R	213-¾	200	(200-¾)	
LNAV MDA*	460-¾ 447 (500-¾)	460-1 447 (500-1)		
CIRCLING	460-1 442 (500-1)	480-1 462 (500-1)	520-1½ 502 (600-1½)	580-2 562 (600-2)
CORPUS CHRISTI (CRP) INTL ALTIMETER SETTING				
S-ILS 13R	246-¾	233	(300-¾)	
LNAV MDA*	500-¾ 487 (500-¾)	500-1½ 487 (500-1½)		
CIRCLING	500-1 482 (500-1)	540-1½ 522 (600-1½)	620-2 602 (700-2)	



CORPUS CHRISTI, TEXAS 27°42'N-97°17'W CORPUS CHRISTI NAS (TRUAX FLD) (KNGP)

ILS Y or RNAV (GPS) RWY 13R

SC-3, 07 AUG 2025 to 04 SEP 2025

SC-3, 07 AUG 2025 to 04 SEP 2025