

LOC I-VVS	APP CRS	Rwy Idg	3833
<u>110.7</u>	049°	TDZE	1254
		Apt Elev	1264

LOC RWY 5
JOSEPH A HARDY CONNELLSVILLE (VVS)

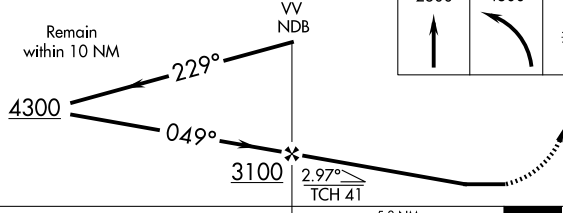
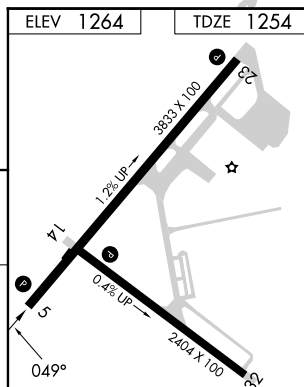
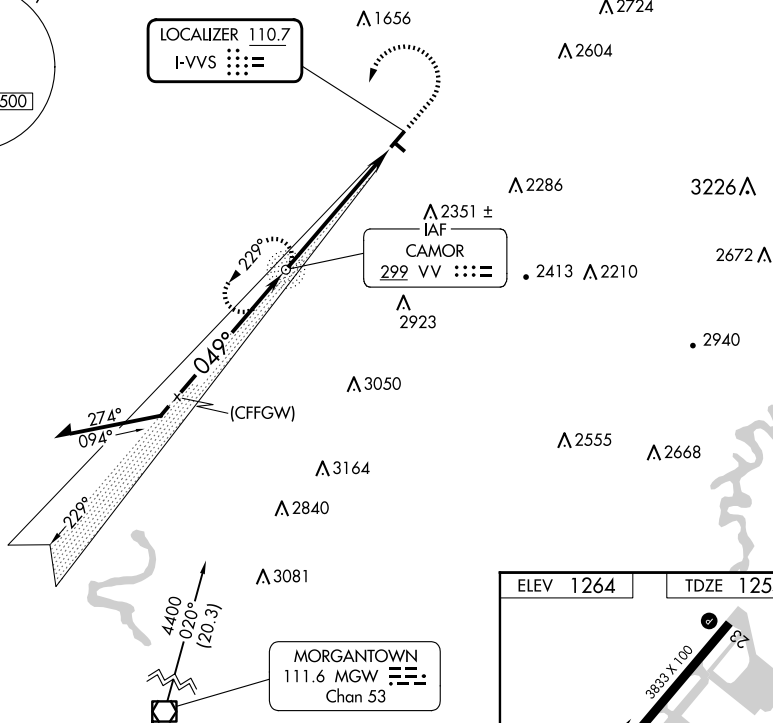
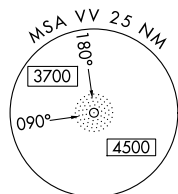
ADF required.

T Circling NA for Cat C south of Rwy 5-23. Rwy 14, 23, 32 helicopter visibility
A NA reduction below 1 SM NA. When local altimeter setting not received, use
MGW altimeter setting and increase all MDA 60 feet and S-5 Cat C visibility
1/8 SM.

MISSED APPROACH: Climb to 2600 then climbing left turn to 4300 direct CAMOR NDB and hold, continue climb-in-hold to 4300.

AWOS-3P
133.325

CLARKSBURG APP CON ★
119.425 284.65

UNICOM
122.8 (CTAF) **L**

CATEGORY	A	B	C	D	REIL Rwy 5 ① MIRL Rwy 5-23 and 14-32 ① FAF to MAP 5.8 NM
S-LOC 5	1660-1	406 (400-1)	1660-1 1/8 406 (400-1 1/8)	NA	
CIRCLING	1920-1 656 (700-1)	2260-1 1/2 996 (1000-1 1/2)	2540-3 1276 (1300-3)	NA	Knots 60 90 120 150 180 Min:Sec 5:48 3:52 2:54 2:19 1:56

CONNELLSVILLE, PENNSYLVANIA

JOSEPH A HARDY CONNELLSVILLE (VVS)

Amdt 4D 26DEC24

39°58'N-79°39'W

LOC RWY 5

NE-4, 07 AUG 2025 to 04 SEP 2025

NE-4, 07 AUG 2025 to 04 SEP 2025