

WAAS CH 90112 W35A	APP CRS 351°	Rwy Idg 6005 TDZE 336 Apt Elev 342
--	------------------------	---

RNAV (GPS) RWY 35

CONCORD MUNI (CON)

RNP APCH - GPS.

T Circling Rwy 12, 17, 30 NA at night. For uncompensated Baro-VNAV systems, **A** LNAV/VNAV NA below -20°C or above 54°C. For inop ALS, increase LNAV/VNAV visibility to 1¾ SM, LNAV Cats C and D visibility to 1¾ SM.

MALSR



MISSED APPROACH:

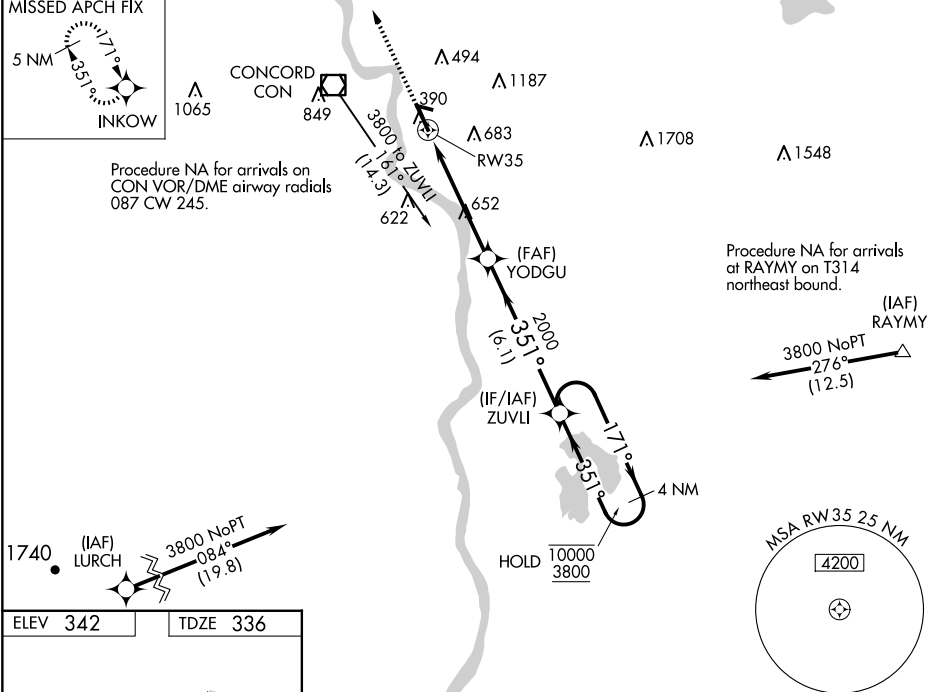
Climb to 4500 direct INKOW and hold, continue climb-in-hold to 4500.

ASOS 132.325	BOSTON APP CON 127.35 269.075	CLNC DEL 133.65	UNICOM 122.7 (CTAF) 0
------------------------	---	---------------------------	---------------------------------

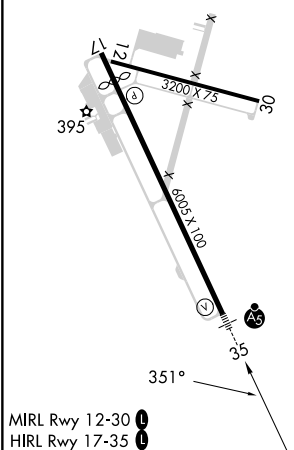
MISSED APCH FIX



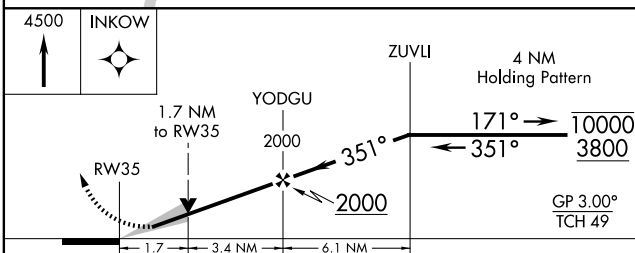
Procedure NA for arrivals on
CON VOR/DME airway radials
087 CW 245.




ELEV 342		TDZE 336
----------	--	----------



MIRL Rwy 12-30 **L**
HIRL Rwy 17-35 **L**



CATEGORY		A	B	C	D
LPV	DA	586-1½ 250 (300-½)			
RNAV/ VNAV	DA	967-1¾ 631 (700-1¾)			
RNAV	MDA	940-½ 604 (600-½)		940-1¾ 604 (600-1¾)	
 CIRCLING		940-1 598 (600-1)	1080-1 738 (800-1)	1500-3 1158 (1200-3)	