

VOR/DME C

VORTAC CBM 115.2 Chgn 99	APCH CRS 060°	Rwy Idg N/A TDZE N/A Arpt Elev 218
--	-------------------------	---

[USAF]

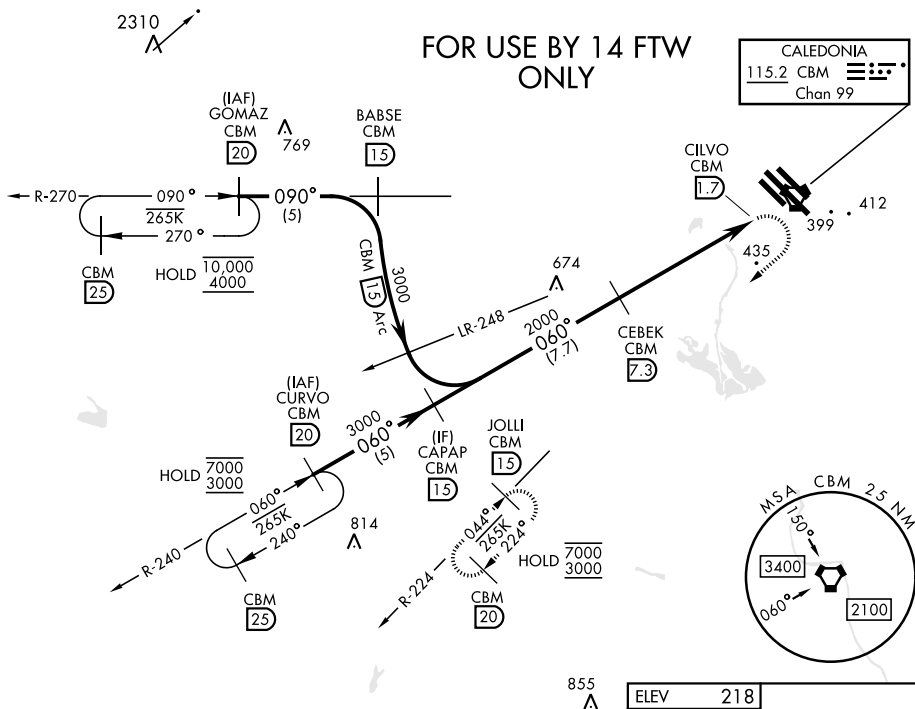
COLUMBUS AFB (KCBM)

RADAR required

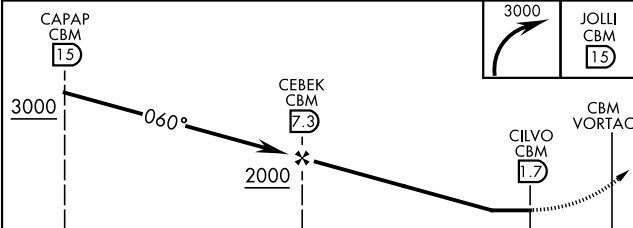
T When circling to Rwy 31R at night, operational VGSI required, remain on or above VGSI glidepath until threshold.
Rwy 31R helicopter visibility reduction below 1 mile not authorized.

MISSED APPROACH: Climbing right turn to 3000 direct JOLI (CBM R-224/15 DME) and hold.

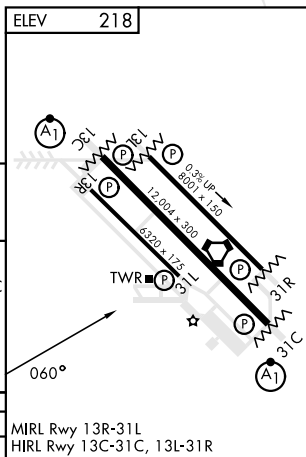
ATIS ★	APP CON ★		TOWER ★	GND CON ★	CLNC DEL ★
115.2 273.5	134.55 350.3 (SE)	135.6 323.275 (SW)	126.65 379.925	121.9 275.8	269.55
	126.075 239.25 (N)				



EMERG SAFE ALT 100 NM 3700



CATEGORY	A	B	C
C CIRCLING	800-1½	582	(600-1½)



COLUMBUS, M|SS|SS|PP|

33° 39'N-88° 27'W

COLUMBUS AFB (KCBM)

Orig 15MAY25

VOR/DME C

SC-4, 07 AUG 2025 to 04 SEP 2025