

TACAN RWY 31R

VORTAC CBM <b>115.2</b> Chan <b>99</b>	APCH CRS <b>302°</b>	Rwy Idg <b>8001</b> TDZE <b>218</b> Arpt Elev <b>218</b>
--	-------------------------	--

[USAF]

COLUMBUS AFB (KCBM)

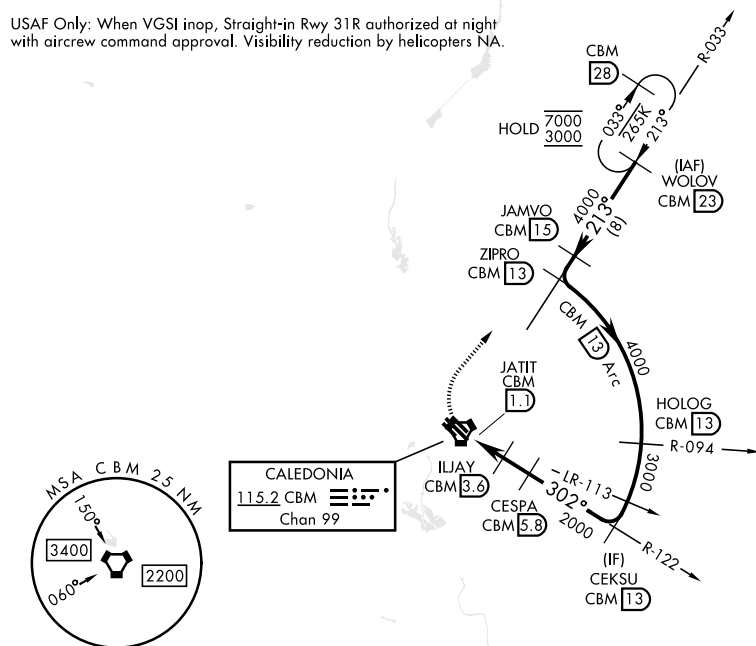
**T** Missed approach requires use of RNAV or ATC RADAR monitoring.

**MISSED APPROACH:** Climbing right turn to WOLOV and hold as published. Maintain 3000.

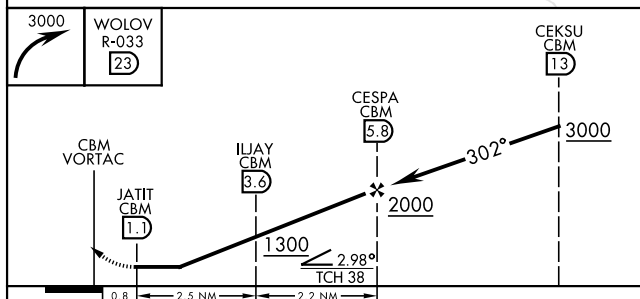
ATIS ★	APP CON ★	TOWER ★	GND CON ★	CLNC DEL ★
115.2 273.5	126.075 239.25 N 134.55 350.3 SE 135.6 323.275 SW	126.65 379.925	121.9 275.8	269.55


Straight-in Rwy 31R at Night, operational VGSi required, remain on or above VGSi glidepath until threshold.

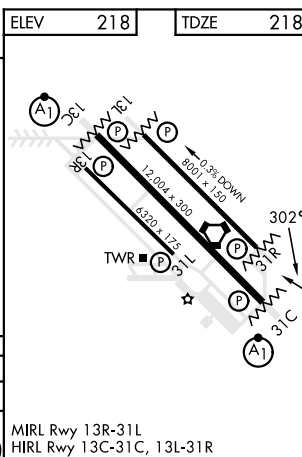
USAF Only: When VGSI inop, Straight-in Rwy 31R authorized at night with aircrew command approval. Visibility reduction by helicopters NA.



EMERG SAFE ALT 100 NM 3700



CATEGORY	A	B	C	D	E
S-31R	680/55 462 (500-1)		680-1 $\frac{3}{8}$ 462 (500-1 $\frac{3}{8}$ )		
 CIRCLING	700-1 482 (500-1)	720-1 502 (600-1)	740-1 $\frac{1}{2}$ 522 (600-1 $\frac{1}{2}$ )	880-2 662 (700-2)	1240-3 1022 (1100-3)



COLUMBUS, MISSISSIPPI

33° 39' N-88° 27' W

COLUMBUS AFB (KCBM)

Amdt 1 21APR22

## TACAN RWY 31R

SC-4, 07 AUG 2025 to 04 SEP 2025

SC-4, 07 AUG 2025 to 04 SEP 2025