

TACAN RWY 13L

VORTAC CBM	APCH CRS	Rwy Idg
115.2	142°	8001
Chan 99		TDZE 194
		Arpt Elev 218

[USAF]

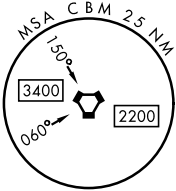
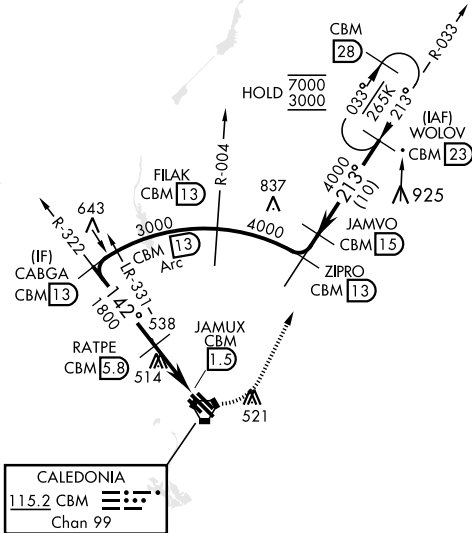
COLUMBUS AFB (KCBM)

Missed Approach requires use of RNAV or ATC RADAR monitoring.
When circling to Rwy 31R at night, operational VGSI required, remain on or above VGSI glidepath until threshold.

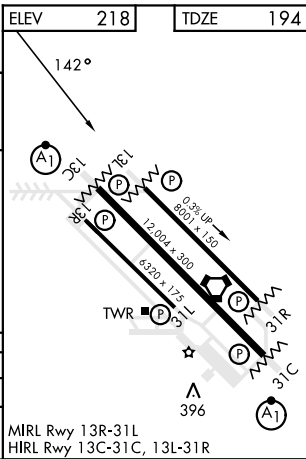
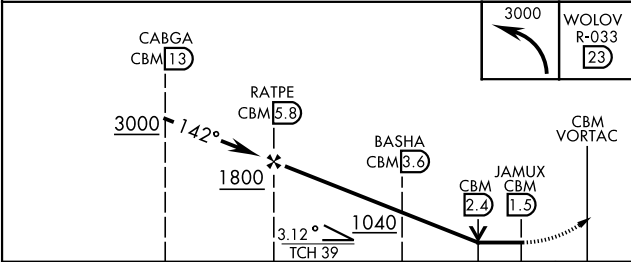
MISSED APPROACH: Climbing left turn to WOLOV and hold as published. Maintain 3000.

ATIS★	APP CON★	TOWER★	GND CON★	CLNC DEL★
115.2 273.5	126.075 239.25 N 134.55 350.3 SE 135.6 323.275 SW	126.65 379.925	121.9 275.8	269.55

950



EMERG SAFE ALT 100 NM 3700



CATEGORY	A	B	C	D	E
S-13L	660/55 466 (500-1)	660-1 466 (500-1 1/2)	660-1 466 (500-1 1/2)	660-1 466 (500-1 1/2)	660-1 466 (500-1 1/2)
CIRCLING	700-1 482 (500-1)	720-1 502 (600-1)	740-1 522 (600-1 1/2)	880-2 662 (700-2)	1240-3 1022 (1100-3)

MIRL Rwy 13R-31L
HIRL Rwy 13C-31C, 13L-31R

TACAN RWY 13L

SC-4, 07 AUG 2025 to 04 SEP 2025

SC-4, 07 AUG 2025 to 04 SEP 2025