

COLUMBUS, MISSISSIPPI

RNAV (GPS) RWY 31C

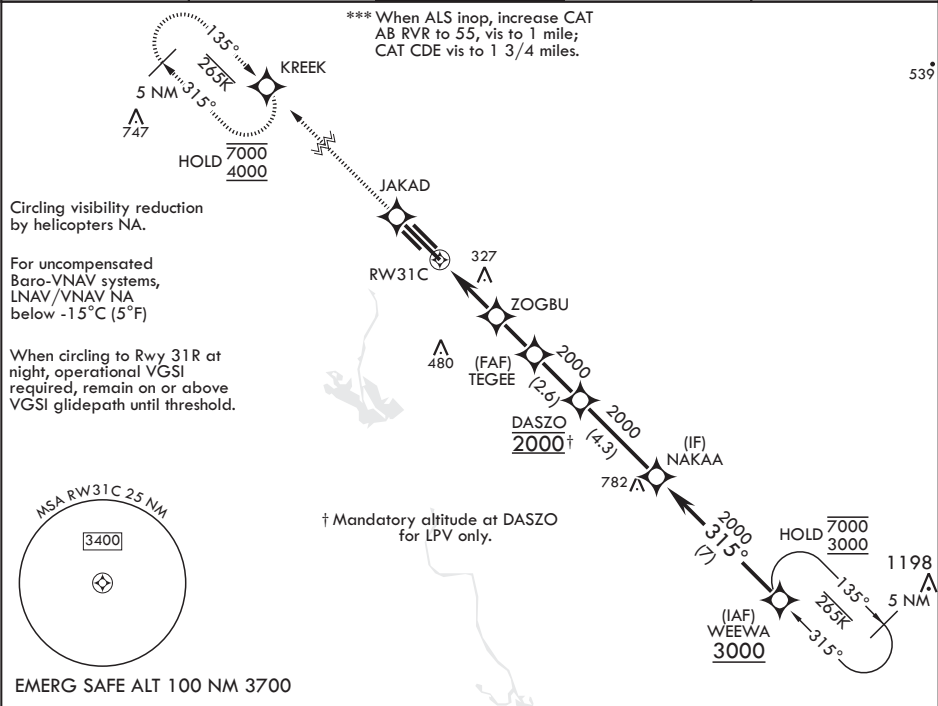
WAAS CH 89580 W31A	APCH CRS 315°	Rwy ldg TDZE Arprt Elev	12,004 213 218
--------------------------	------------------	-------------------------------	----------------------

AL-91 (USAF)

COLUMBUS AFB (KCBM)

RNP APCH	ALSF-1	MISSED APPROACH: Climb to 4000 direct JAKAD, direct KREEK and hold.
* When ALS inop increase RVR to 40, vis to ¾ mile. ** When ALS inop, increase vis to 1 3/8 miles.		

ATIS★ 115.2 273.5	APP CON★ 126.075 239.25 N 134.55 350.3 SE 135.6 323.275 SW	TOWER★ 126.65 379.925	GND CON★ 121.9 275.8	CLNC DEL★ 269.55
----------------------	---	--------------------------	-------------------------	---------------------



4000	JAKAD	tr 315°	KREEK	ELEV 218	TDZE 213
CATEGORY	A	B	C	D	E
LPV DA*	413/24	200	(200-½)		
LNAV/VNAV DA**	671/45	458	(500-¾)		
LNAV MDA***	840/24 627 (700-½)	840-1¾ 627 (700-1¾)			
CIRCLING	840-1 622 (700-1)	880-2 662 (700-2)	1240-3 1022 (1100-3)		

HIRL Rwy 13C-31C, 13L-31R
MIRL Rwy 13R-31L

COLUMBUS, MISSISSIPPI

33°39'N - 88°27'W

COLUMBUS AFB (KCBM)

Amtdt 4 07SEP23

RNAV (GPS) RWY 31C

SC-4, 07 AUG 2025 to 04 SEP 2025

SC-4, 07 AUG 2025 to 04 SEP 2025