

COLUMBUS, MISSISSIPPI

LOC I-TBB	APCH CRS	31C	31R
108.7	315°	Rwy Idg 12,004	8001
		TDZE 213	218
		Arpt Elev 218	218

[USAF]

COLUMBUS AFB (KCBM)

ILS or LOC Y RWY 31C

<p>▼ * When ALS inop, increase RVR to 40, vis to ¼ mile.</p> <p>** When ALS inop, increase CAT AB RVR to 55, vis to 1 mile: CAT CDE vis to 1¼ miles.</p> <p>† When ALS inop, increase CAT AB RVR to 55, vis to 1 mile: CAT CDE vis to 1¾ miles.</p>	<p>ALSF-1</p> <p>(A1)</p>	<p>MISSED APPROACH: Climb heading 315° to intercept the VOR/TAC CBM R-315 outbound to KREEK (CBM R-315/20) and hold. Maintain 4000.</p>
---	---------------------------	---

ATIS★	APP CON★	TOWER★	GND CON★	CLNC DEL★
115.2 273.5	SE 134.55 350.3 SW 135.6 323.275 N 126.075 239.25	126.65 379.925	121.9 275.8	269.55

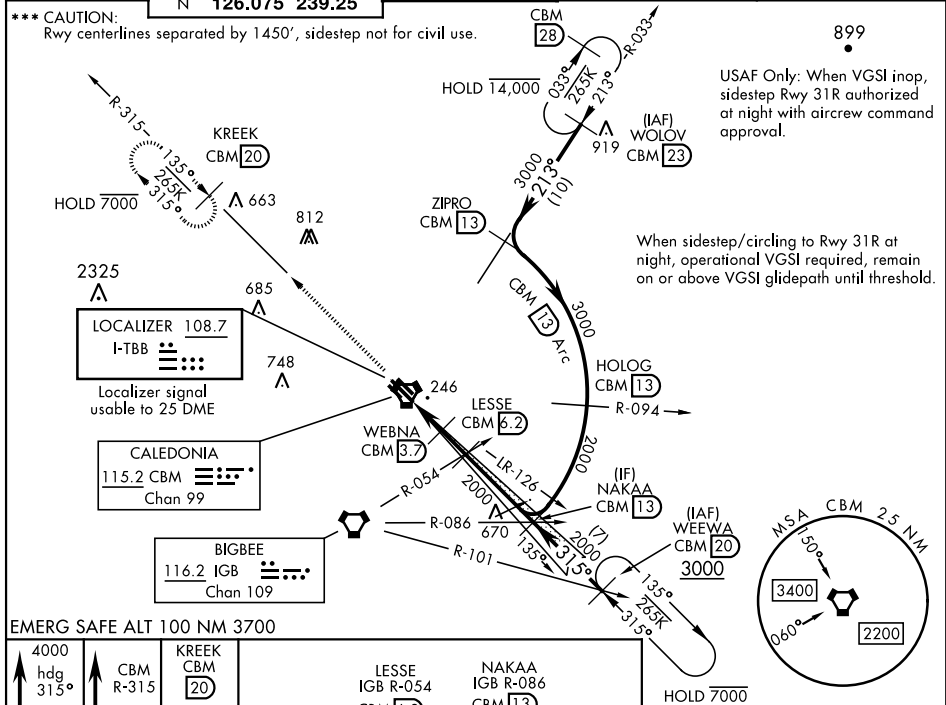
*** CAUTION:

Rwy centerlines separated by 1450', sidestep not for civil use.

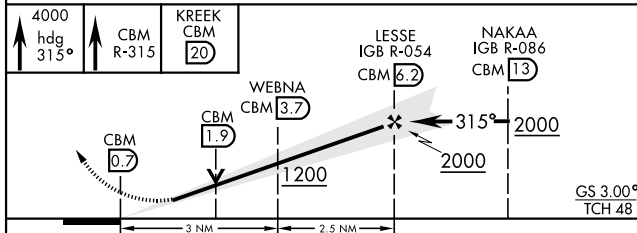
899

USAF Only: When VGSI inop, sidestep Rwy 31R authorized at night with aircrew command approval.

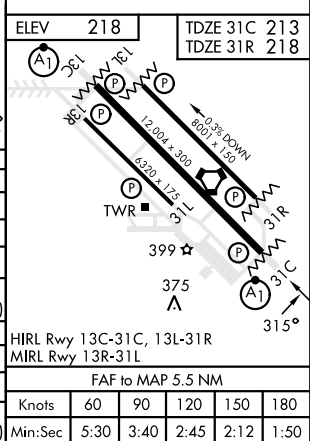
When sidestep/circling to Rwy 31R at night, operational VGSI required, remain on or above VGSI glidepath until threshold.



EMERG SAFE ALT 100 NM 3700



CATEGORY	A	B	C	D	E
S-ILS 31C**		413/24	200	(200-½)	
S-LOC 31C**	640/24	427 (500-½)	640/40	427 (500-¾)	
SIDESTEP RWY 31R***	640/55	422 (500-1)	640-1 ¼	422 (500-1 ¼)	
CIRCLING	700-1 482 (500-1)	720-1 502 (600-1)	740-1 ½ 522 (600-1 ½)	880-2 662 (700-2)	1240-3 1022 (1100-3)
LOCAL ALTIMETER, WITHOUT LAST STEPDOWN FIX					
S-LOC 31C †	720/24	507 (600-½)	720/55	507 (600-1)	
SIDESTEP*** RWY 31R	760/55	542 (600-1)	760-1 ½	542 (600-1 ½)	
CIRCLING	760-1	542 (600-1)	760-1 ½ 542 (600-1 ½)	880-2 662 (700-2)	1240-3 1022 (1100-3)



COLUMBUS, MISSISSIPPI

33° 39' N-88° 27' W

COLUMBUS AFB (KCBM)

Amdt 2 23FEB23

ILS or LOC Y RWY 31C