

COLUMBUS, MISSISSIPPI

HI-ILS or LOC Z RWY 31C

LOC I-TBB 108.7	APCH CRS 315°	31C Rwy Ldg 12,004 TDZE 213 Arpt Elev 218	31R 8001 218 218
---------------------------	-------------------------	---	--

[USAF]

COLUMBUS AFB (KCBM)

- * When ALS inop, increase RVR to 40, vis to $\frac{3}{4}$ mile.
 ** When ALS inop, increase vis to $1\frac{1}{4}$ mile.
 † When ALS inop, increase vis to $1\frac{3}{4}$ mile.



MISSED APPROACH: Climb heading 315° to intercept the VOR/TAC CBM R-315 outbound to KREEK (CBM R-315/20) and hold. Maintain 4000.

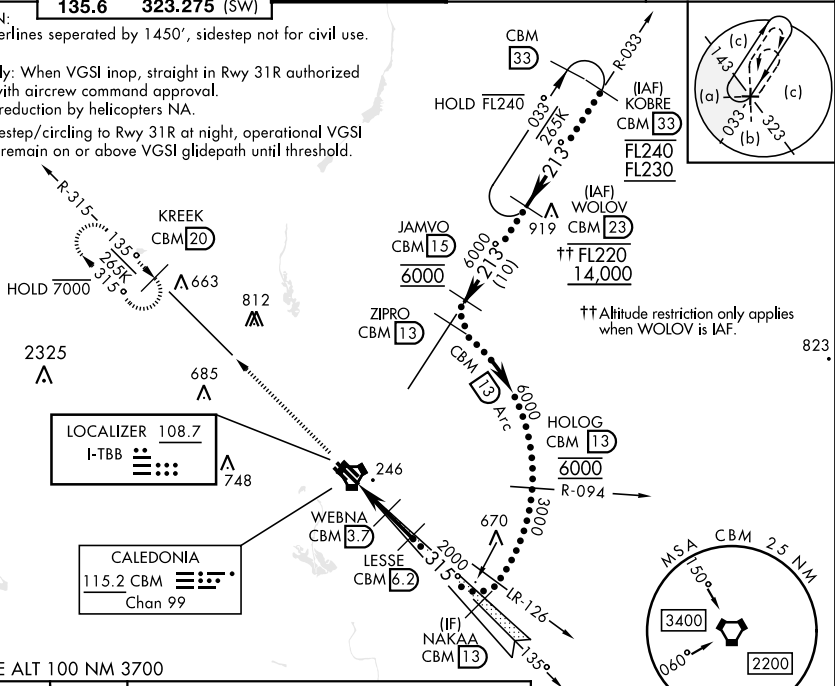
ATIS★ 115.2 273.5	APP CON★ 126.075 239.25 (N) 134.55 350.3 (SE) 135.6 323.275 (SW)	TOWER★ 126.65 379.925	GND CON★ 121.9 275.8	CLNC DEL★ 269.55
-----------------------------	--	---------------------------------	--------------------------------	----------------------------

*** CAUTION:

Rwy centerlines separated by 1450', sidestep not for civil use.

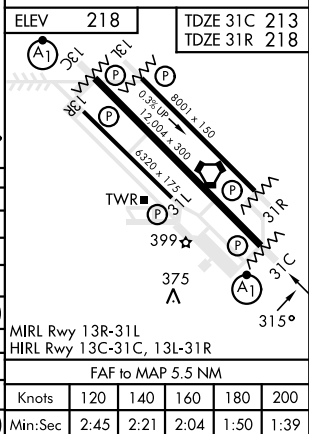
USAF Only: When VGSI inop, straight in Rwy 31R authorized at night with aircrew command approval. Visibility reduction by helicopters NA.

When sidestep/circling to Rwy 31R at night, operational VGSI required, remain on or above VGSI glidepath until threshold.



EMERG SAFE ALT 100 NM 3700

4000 hdg 315°	CBM R-315	KREEK CBM 20	LESSE CBM 6.2	NAKAA CBM 13
3000	2000	1200	3000	3000
3 NM	2.5 NM			
CATEGORY	C	D	E	
S-ILS 31C*	413/24	200 (200-1/2)		
S-LOC 31C**	640/40	427 (500-3/4)		
SIDESTEP *** RWY 31R	640-1 1/4	422 (500-1/4)		
CIRCLING	740-1 1/2 522 (600-1 1/2)	880-2 662 (700-2)	1240-3 1022 (1100-3)	
LOCAL ALTIMETER, WITHOUT LAST STEPDOWN FIX				
S-LOC 31C †	720/55	507 (600-1)		
SIDESTEP *** RWY 31R	760-1 1/8	542 (600-1/8)		
CIRCLING	760-1 1/8 542 (600-1 1/8)	880-2 662 (700-2)	1240-3 1022 (1100-3)	



COLUMBUS, MISSISSIPPI

33°39'N-88°27'W

COLUMBUS AFB (KCBM)

Amdt 2 21APR22

HI-ILS or LOC Z RWY 31C