

LOC I-CBM 109.3	APCH CRS 135°	13C 13L Rwy Idg 12,004 8001 TDZE 196 194 Arpt Elev 218 218	[USAF]	COLUMBUS AFB (KCBM)
---------------------------	-------------------------	--	--------	---------------------

▼ *When ALS inop, increase RVR to 40, vis to ¾ mile.
 ** When ALS inop, increase vis to 1¾ miles.

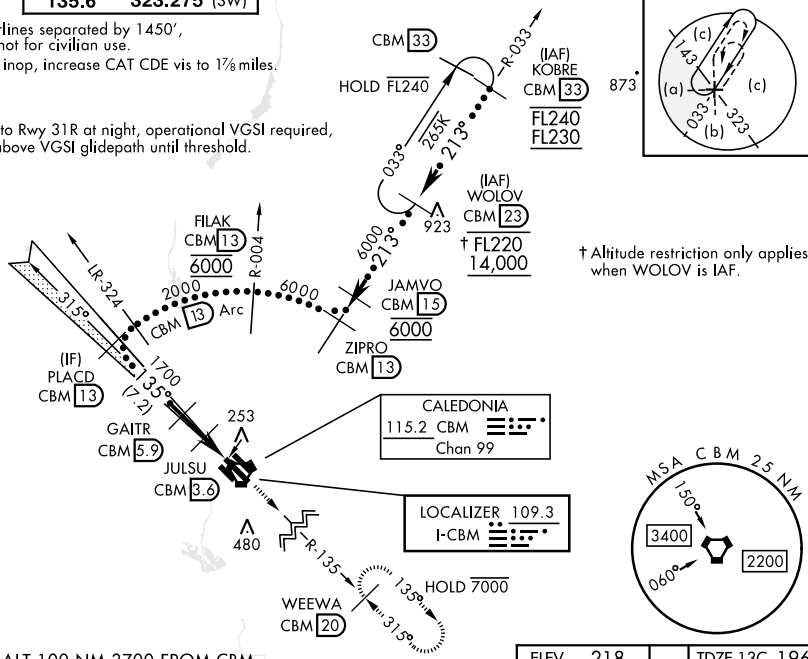


MISSED APPROACH: Climb heading 135° to intercept the CBM VORTAC R-135 outbound to WEEWA (CBM R-135/20) and hold. Maintain 4000

ATIS★ 115.2 273.5	APP CON★ 126.075 239.25 (N) 134.55 350.3 (SE) 135.6 323.275 (SW)	TOWER★ 126.65 379.925	GND CON★ 121.9 275.8	CLNC DEL★ 269.55
-----------------------------	--	---------------------------------	--------------------------------	----------------------------

*** CAUTION:
 Rwy centerlines separated by 1450',
 SIDESTEP not for civilian use.
 **** When ALS inop, increase CAT CDE vis to 1¾ miles.

When circling to Rwy 31R at night, operational VGSI required,
 remain on or above VGSI glidepath until threshold.



EMERG SAFE ALT 100 NM 3700 FROM CBM

PLACD CBM 13	GAITR CBM 5.9	JULSU CBM 3.6	CBM 2.5	CBM 1.3	ELEV 218	TDZE 13C 196 TDZE 13L 194
2000	1700	980				
GS 3.00° TCH 49						
	2.3 NM	2.3 NM				
CATEGORY	C	D	E			
S-ILS 13C*	396/24	200	(200-½)			
S-LOC 13C**	640/45	444	(500-¾)			
SIDESTEP *** RWY 13L	640-1¾	446	(500-1¾)			
CIRCLING	740-1½ 522 (600-1½)	880-2 662 (700-2)	1240-3 1022 (1100-3)			
LOCAL ALTIMETER, WITHOUT LAST STEPDOWN FIX						
S-LOC 13C****	840-1¾	644	(700-1¾)			
SIDESTEP *** RWY 13L	840-1¾	646	(700-1¾)			
CIRCLING	840-1¾ 622 (700-1¾)	880-2 662 (700-2)	1240-3 1022 (1100-3)			
MIRL Rwy 13R-31L HIRL Rwy 13C-31C, 13L-31R						
FAF to MAP 4.6 NM						
	Knots	120	140	160	180	200
	Min:Sec	2:18	1:58	1:44	1:32	1:23