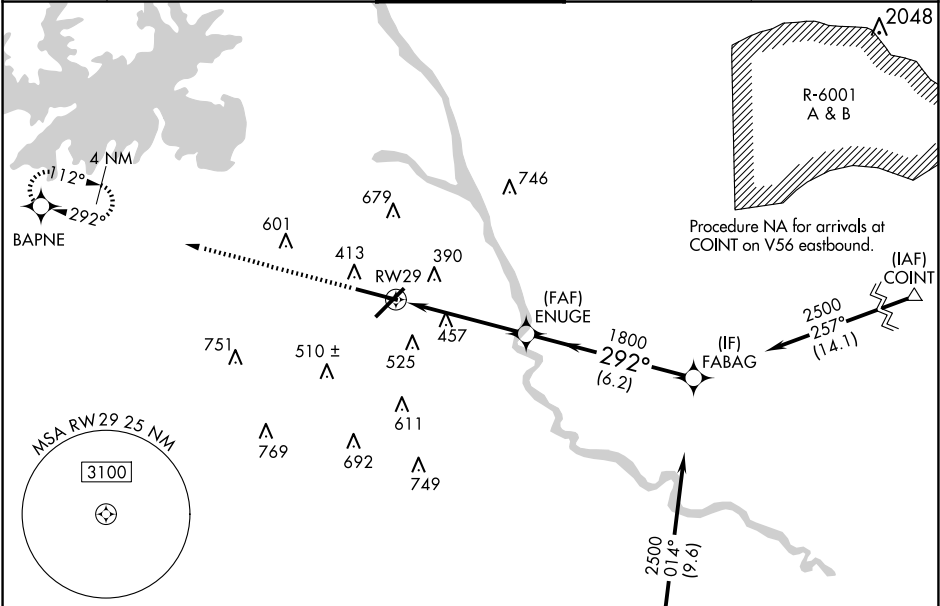


WAAS CH <b>53414</b> <b>W29A</b>	APP CRS <b>292°</b>	Rwy Idg TDZE Apt Elev	<b>8506</b> <b>227</b> <b>236</b>
--	------------------------	-----------------------------	---

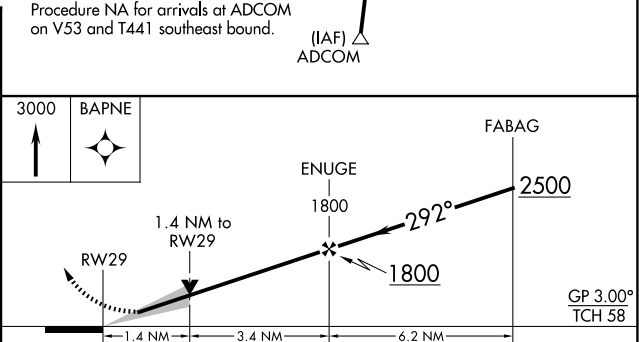
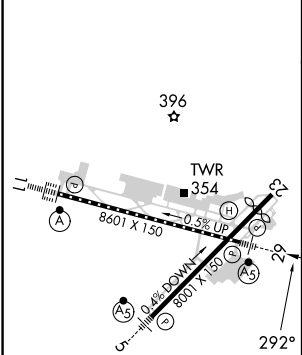
RNAV (GPS) RWY 29  
COLUMBIA METRO (CAE)

RNP APCH - GPS.	MALSR	MISSED APPROACH: Climb to 3000 direct BAPNE and hold.
▼ For uncompensated Baro-VNAV systems, LNAV/VNAV NA below -5°C or above 54°C. For inop ALS, increase LNAV/VNAV all Cats visibility to RVR 4500 and LNAV Cats C and D to 1½ SM. * RVR 1800 authorized with use of FD or AP or HUD to DA.	AS	

ATIS <b>120.15</b>	COLUMBIA APP CON <b>133.4 285.6 (290°-109°)</b> <b>124.15 338.2 (110°-289°)</b>	COLUMBIA TOWER <b>119.5 257.8</b>	GND CON <b>121.9 348.6</b>	CLNC DEL <b>119.75</b>
-----------------------	---	--------------------------------------	-------------------------------	---------------------------



ELEV 236	D	TDZE 227
----------	---	----------



CATEGORY	A	B	C	D
LPV DA*	427/24 200 (200-½)			
LNAV/VNAV DA	544/24 317 (400-½)			544/40 317 (400-¾)
LNAV MDA	720/24 493 (500-½)		720/50 493 (500-1)	
CIRCLING	740-1 504 (600-1)	860-1 624 (700-1)	1040-2¼ 804 (900-2¼)	1040-2½ 804 (900-2½)

SE-2, 07 AUG 2025 to 04 SEP 2025

SE-2, 07 AUG 2025 to 04 SEP 2025