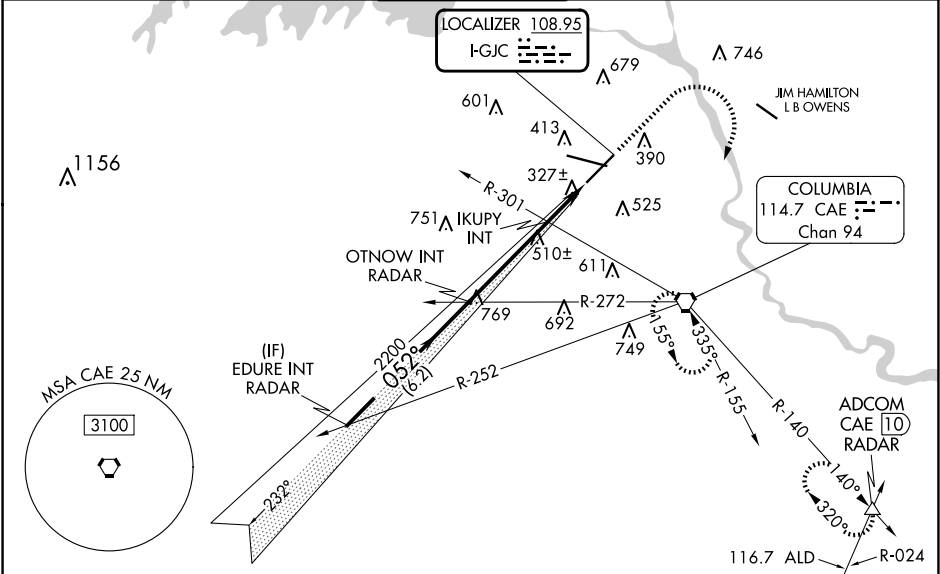


LOC I-GJC	APP CRS	Rwy Idg	7001
108.95	052°	TDZE	228
		Apt Elev	236

ILS or LOC Rwy 5

COLUMBIA METRO (CAE)

RADAR required for procedure entry.		MISSED APPROACH: Climb to 1500 then climbing right turn to 2300 direct CAE VORTAC and hold, continue climb-in-hold to 2300. (TACAN aircraft continue on CAE VORTAC R-140 to ADCOM INT/CAE VORTAC 10 DME and hold NW, right turn, 140° inbound).	
For inop ALS, increase S-ILS 5 Cat E visibility to RVR 4000, increase S-LOC 5 Cats C/D/E visibility to 2 SM and increase IKUPY minimums S-LOC 5 Cats C/D/E visibility to RVR 5500. *RVR 1800 authorized with use of FD or AP or HUD to DA.			
ATIS	COLUMBIA APP CON	COLUMBIA TOWER	GND CON
120.15	133.4 285.6 (290°-109°) 124.15 338.2 (110°-289°)	119.5 257.8	121.9 348.6
			CLNC DEL
			119.75



VGSi and ILS glidepath not coincident (VGSi Angle 3.00/TCH 73).		1500	2300	CAE	ELEV 236	TDZE 228
EDURE/INT RADAR		OTNOW/INT RADAR		IKUPY INT		
2200 052°		2200		960		
GS 3.00° TCH 60		6.2 NM		3.9 NM	2.1 NM	
CATEGORY	A	B	C	D	E	
S-ILS 5*	428/24 200 (200-½)					
S-LOC 5	960/24	732 (800-½)	960-1½	732 (800-1½)		
CIRCLING	960-1	724 (800-1)	1040-2¼ 804 (900-2¼)	1040-2½ 804 (900-2½)	1040-2¾ 804 (900-2¾)	
IKUPY FIX MINIMUMS (DUAL VOR RECEIVER REQUIRED)						
S-LOC 5	580/24	352 (400-½)	580/30	352 (400-¾)		
CIRCLING	740-1 504 (600-1)	860-1 624 (700-1)	1040-2¼ 804 (900-2¼)	1040-2½ 804 (900-2½)	1040-2¾ 804 (900-2¾)	
REIL Rwy 23 TDZ/CL Rwy 11 HIRL Rlys 5-23 and 11-29 FAF to MAP 6 NM						
Knots						
60 90 120 150 180						
Min:Sec						
6:00 4:00 3:00 2:24 2:00						