

LOC/DME I-CAE	APP CRS	Rwy Idg	8601
110.3	112°	TDZE	236
Chan 40		Apt Elev	236

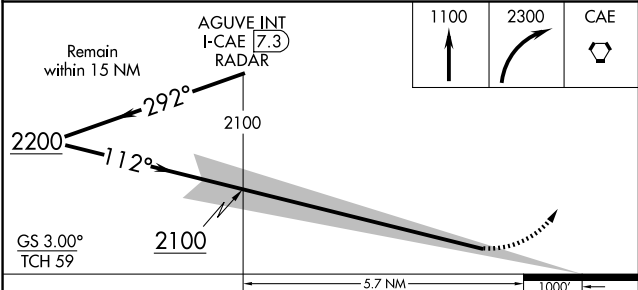
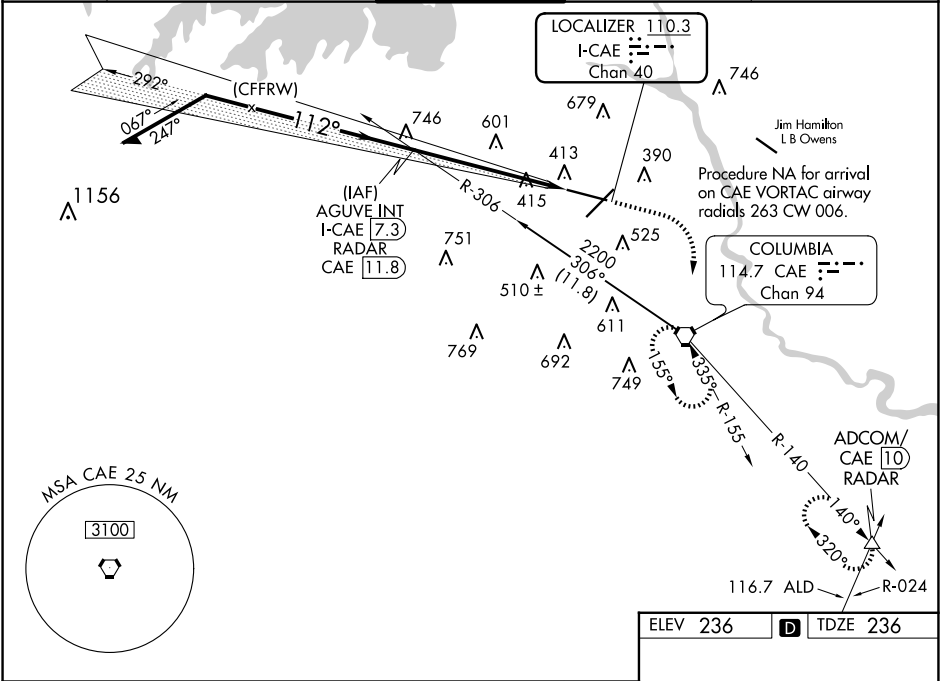
ILS RWY 11 (CAT II & III)

COLUMBIA METRO (CAE)

ALSF-2

MISSED APPROACH: Climb to 1100 then climbing right turn to 2300 direct CAE VORTAC and hold, continue climb-in-hold to 2300. (TACAN aircraft continue on CAE VORTAC R-140 to ADCOM INT/CAE VORTAC 10 DME and hold NW, right turn, 140° inbound)

ATIS	COLUMBIA APP CON	COLUMBIA TOWER	GND CON	CLNC DEL
120.15	133.4 285.6 (290°-109°) 124.15 338.2 (110°-289°)	119.5 257.8	121.9 348.6	119.75



CATEGORY	A	B	C	D
S-ILS 11	CAT II RA 128/12 100 DA 336			
S-ILS 11	CAT III RVR 06			

CATEGORY II & III ILS-SPECIAL AIRCREW
& AIRCRAFT CERTIFICATION REQUIRED

