

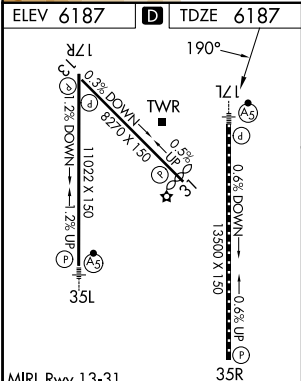
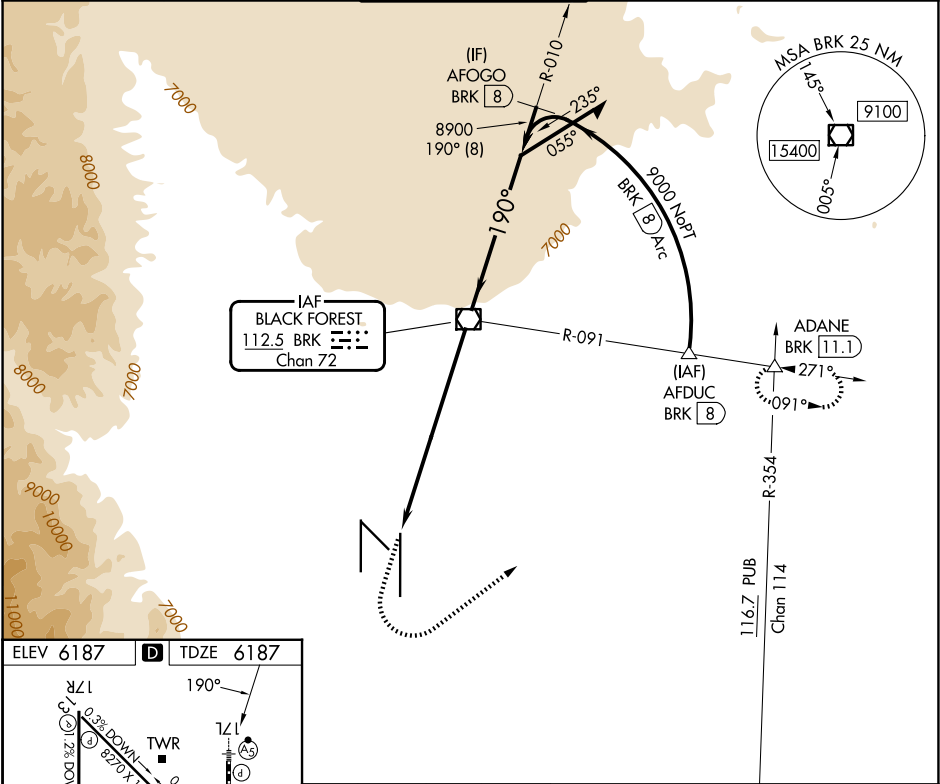
VOR/DME BRK	APP CRS	Rwy Ldg
112.5	190°	13500
Chan 72		TDZE 6187
		Apt Elev 6187

VOR RWY 17L

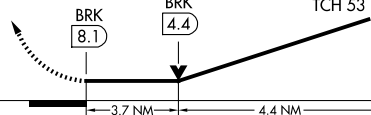
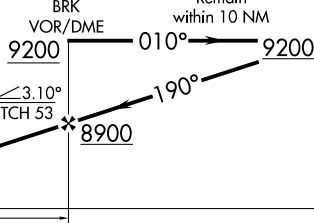
CITY OF COLORADO SPRINGS MUNI (COS)

DME and RADAR required for procedure entry at AFDUC.	MALSR	MISSED APPROACH: Climb to 7900 then climbing left turn to 9000 on heading 045° and BRK VOR/DME R-091 to ADANE INT/BRK VOR/DME 11.1 DME and hold.
Inop table does not apply.	AS	

ATIS	SPRINGS APP CON	SPRINGS TOWER	GND CON	CLNC DEL
125.0 254.3	124.0 257.875	119.9 360.6	121.7 348.6	134.45 363.125



MIRL Rwy 13-31		35R			
HIRL Rwys 17R-35L and 17L-35R					
REIL Rwys 13, 17R, 31 and 35R					
TDZ/CL Rwys 17L and 35R					
FAF to MAP 8.1 NM					
Knots	60	90	120	150	180
Min:Sec	8:06	5:24	4:03	3:14	2:42

7900	9000	BRK R-091	ADANE △				
↑	hdg 045°						
VGSI and descent angles not coincident (VGSI Angle 3.00/TCH 57).							
							
CATEGORY	A		B		C	D	
S-17L	7440-1¼ 1253 (1300-1¼)		7440-1½ 1253 (1300-½)		7440-3	1253 (1300-3)	
CIRCLING	7440-1¼ 1253 (1300-1¼)		7440-1½ 1253 (1300-½)		7440-3	1253 (1300-3)	

VOR RWY 17L