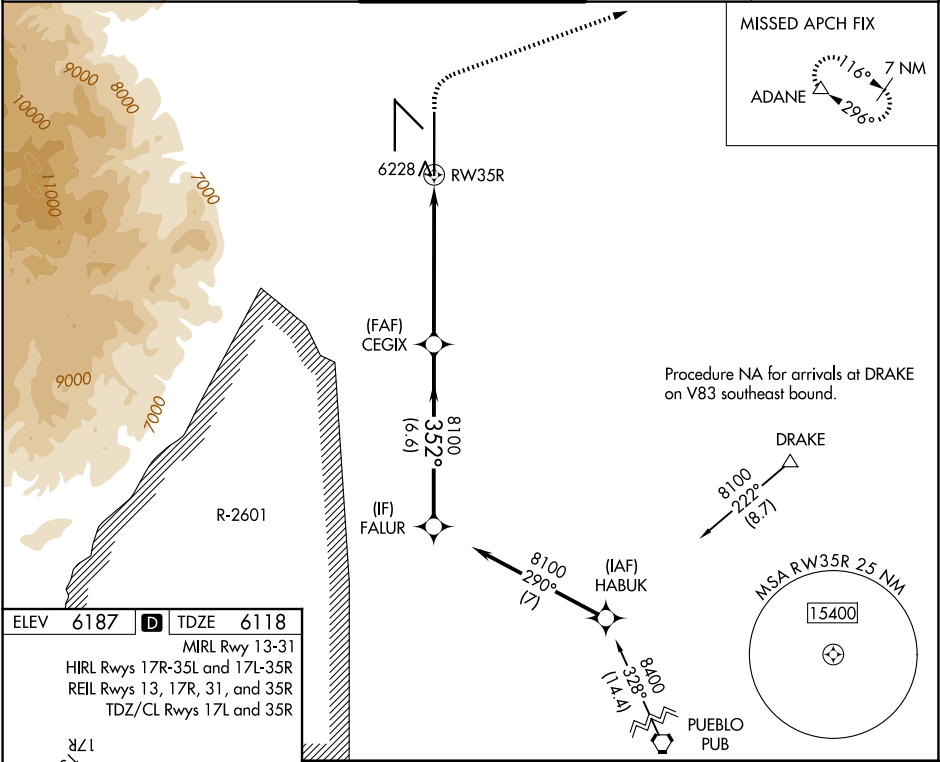


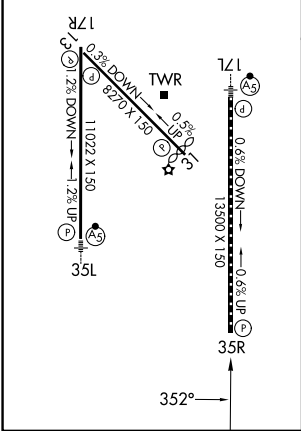
WAAS CH <b>53602</b> <b>W35B</b>	APP CRS <b>352°</b>	Rwy Ldg TDZE <b>6118</b> Apt Elev <b>6187</b>
--	------------------------	---

RNAV (GPS) Y RWY 35R  
CITY OF COLORADO SPRINGS MUNI (COS)

<p><b>⚠</b> For uncompensated Baro-VNAV systems, LNAV/VNAV NA below -21°C (-5°F) or above 39°C (103°F). DME/DME RNP-0.3 NA. RADAR monitoring required when R-2601 in use.</p>		<p>MISSED APPROACH: Climb to 6600 then climbing right turn to 9000 direct ADANE and hold.</p>		
ATIS <b>125.0 254.3</b>	SPRINGS APP CON <b>124.0 257.875</b>	SPRINGS TOWER <b>119.9 360.6</b>	GND CON <b>121.7 348.6</b>	CLNC DEL <b>134.45 363.125</b>



ELEV <b>6187</b>	<b>D</b>	TDZE <b>6118</b>
MIRL Rwy 13-31 HIRL Rwy 17R-35L and 17L-35R REIL Rwy 13, 17R, 31, and 35R TDZ/CL Rwy 17L and 35R		



VGSI and RNAV glidepath not coincident (VGSI Angle 3.00/TCH 71).				6600 ↑	9000 ↗	ADANE △	
<p>FALUR 8100 → 352° → CEGIX 8100 → RW35R</p> <p>GP 3.00° TCH 55</p> <p>6.6 NM 5.1 NM 1 NM</p> <p>*1 NM to RW35R</p> <p>*LNAV only</p>							
CATEGORY	A		B		C		D
LPV DA	6318/40				200 (200-¾)		
LNAV/VNAV DA	6399/45				281 (300-¾)		
LNAV MDA	6500/55		382 (400-1)		6500/60		382 (400-1¼)
CIRCLING	6740-1 553 (600-1)		6800-1 613 (700-1)		7040-2½ 853 (900-2½)		7260-3 1073 (1100-3)

SW-1, 07 AUG 2025 to 04 SEP 2025

SW-1, 07 AUG 2025 to 04 SEP 2025