

WAAS CH <b>49112</b>	APP CRS <b>352°</b>	Rwy Ldg TDZE <b>6075</b> Apt Elev <b>6187</b>
-------------------------	------------------------	---

RNAV (GPS) Y RWY 35L

CITY OF COLORADO SPRINGS MUNI (COS)

▼

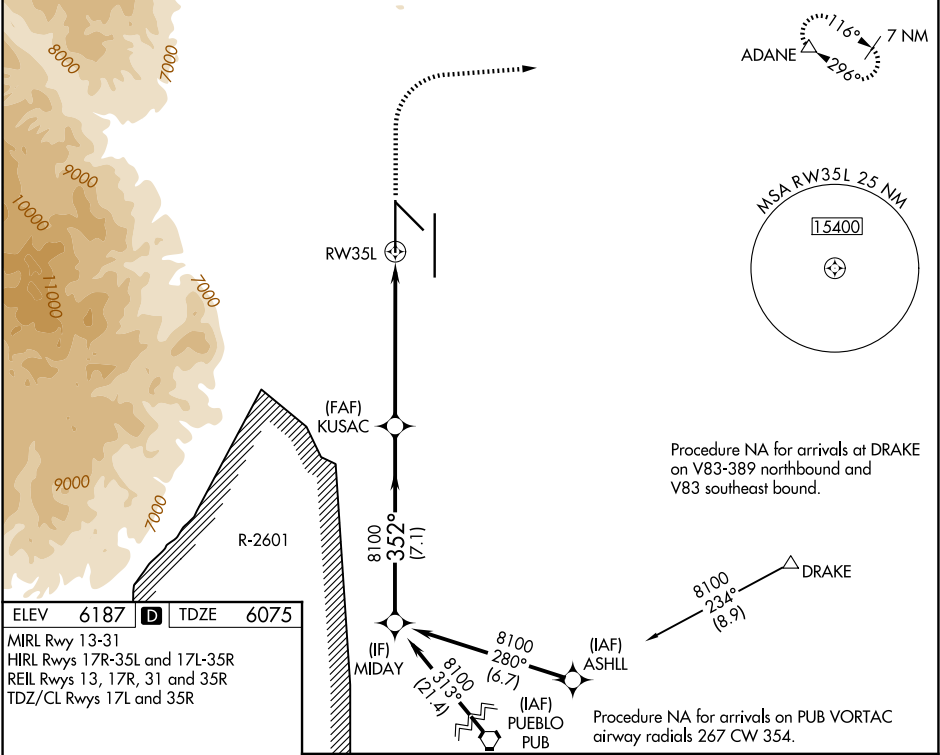
▲

For uncompensated Baro-VNAV systems, LNAV/VNAV NA below -21°C (-5°F) or above 54°C (130°F). DME/DME RNP- 0.3 NA. For inop MALSR increase LNAV Cat C and D visibility to RVR 5500. RADAR monitoring required when R-2601 in use. # RVR 1800 authorized with use of FD or AP or HUD to DA.

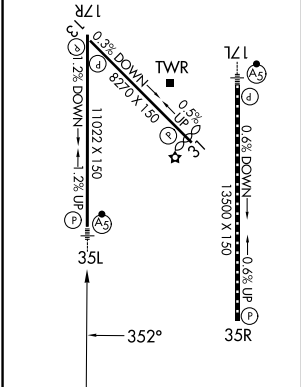
MALSR

MISSED APPROACH:  
Climb to 6700 then climbing right turn to 9000 direct ADANE and hold.

ATIS <b>125.0 254.3</b>	SPRINGS APP CON <b>124.0 257.875</b>	SPRINGS TOWER <b>119.9 360.6</b>	GND CON <b>121.7 348.6</b>	CLNC DEL <b>134.45 363.125</b>
----------------------------	---	-------------------------------------	-------------------------------	-----------------------------------



ELEV 6187	D	TDZE 6075
MIRL Rwy 13-31		
HIRL Rwy 17R-35L and 17L-35R		
REIL Rwy 13, 17R, 31 and 35R		
TDZ/CL Rwy 17L and 35R		



VGSI and RNAV glidepath not coincident (VGSI Angle 3.00/TCH 72).		6700		9000	ADANE
MIDAY		KUSAC 8100		* 1 NM to RW35L	
GP 3.00° TCH 55		8100		* LNAV only	
7.1 NM		5.3 NM		1 NM	
CATEGORY	A	B	C	D	
LPV DA #	6275/24		200 (100-½)		
LNAV/VNAV DA	6380/30		305 (200-⅝)		
LNAV MDA	6440/24	365 (300-½)	6440/35	365 (300-⅝)	
CIRCLING	6740-1 553 (600-1)	6800-1 613 (700-1)	7040-2½ 853 (900-2½)	7260-3 1073 (1100-3)	

SW-1, 07 AUG 2025 to 04 SEP 2025

SW-1, 07 AUG 2025 to 04 SEP 2025