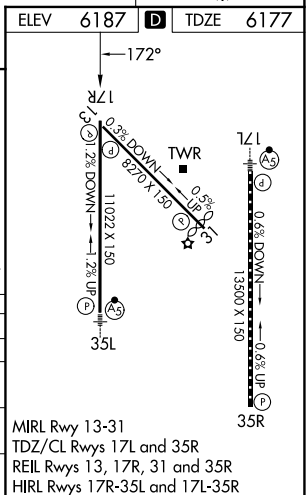


RNAV (GPS) Y RWY 17R  
CITY OF COLORADO SPRINGS MUNI (COS)

**MISSED APPROACH:** Climb to 7000 then climbing left turn to 9000 direct DRAKE and hold.

CLNC DEL  
**134.45 363.125**



CATEGORY		A	B	C	D
LPV	DA	6377/40 200 (200-¾)			
LNAV/ VNAV	DA	6752-2 575 (600-2)			
LNAV	MDA	6680/55	503 (500-1)	6680-1⅓	503 (500-1⅓)
CIRCLING		6740-1 553 (600-1)	6800-1 613 (700-1)	7040-2½ 853 (900-2½)	7260-3 1073 (1100-3)

CITY OF COLORADO SPRINGS MUNI (COS)  
38°48'N-104°42'W RNAV (GPS) Y RWY 17R