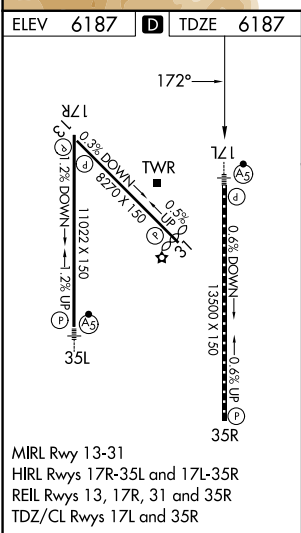
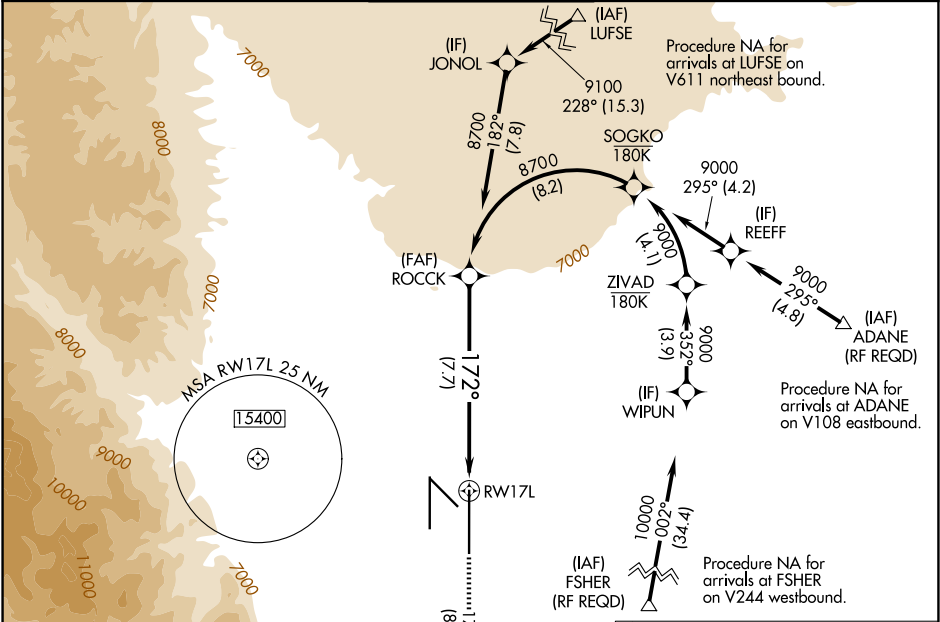


APP CRS	Rwy Ldg	13500
172°	TDZE	6187
	Apt Elev	6187

RNAV (RNP) Z RWY 17L
CITY OF COLORADO SPRINGS MUNI (COS)

RNP AR APCH - GPS.	MALSR	MISSED APPROACH: Climb to 9000 on track 172° to CEGIX and on track 130° to JEMKI and on track 084° to DRAKE and hold.
For uncompensated Baro-VNAV systems, procedure NA below -21°C or above 44°C.		

ATIS 125.0 254.3	SPRINGS APP CON 124.0 257.875	SPRINGS TOWER 119.9 360.6	GND CON 121.7 348.6	CLNC DEL 134.45 363.125
---------------------	----------------------------------	------------------------------	------------------------	----------------------------



ELEV 6187	TDZE 6187	MISSED APCH FIX			
9000	CEGIX	tr 130°	JEMKI	tr 084°	DRAKE
See planview for multiple IF locations.					
GP 3.00° TCH 57					
7.7 NM					
CATEGORY	A	B	C	D	
RNP 0.15 DA	6557/40 370 (400-3/4)				
RNP 0.25 DA	6644/50 457 (500-1)				
RNP 0.30 DA	6920-2 733 (800-2)				
AUTHORIZATION REQUIRED					

SW-1, 07 AUG 2025 to 04 SEP 2025

SW-1, 07 AUG 2025 to 04 SEP 2025