

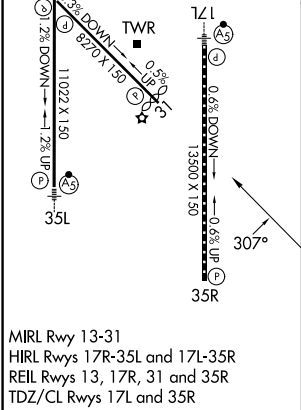
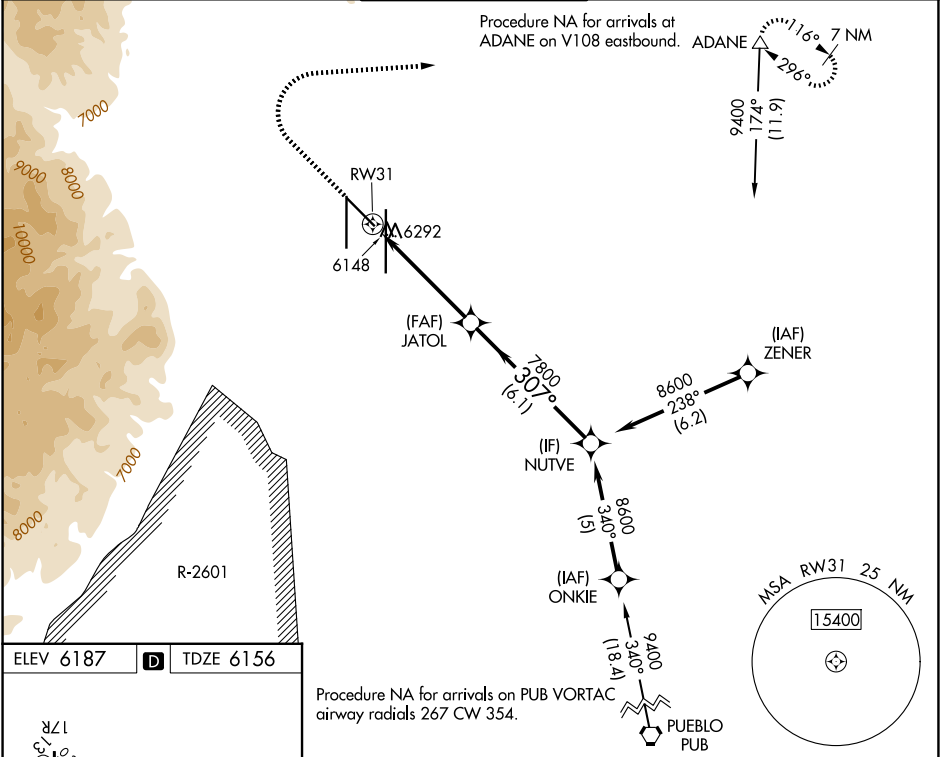
WAAS CH 40040 W31A	APP CRS 307°	Rwy Ldg TDZE Apt Elev	7914 6156 6187
--	------------------------	-----------------------------	---

RNAV (GPS) RWY 31

CITY OF COLORADO SPRINGS MUNI (COS)

<div><div></div><div>DME/DME RNP-0.3 NA.</div></div>	MISSED APPROACH: Climb to 6700 then climbing right turn to 9000 direct ADANE and hold.
--	--

ATIS 125.0 254.3	SPRINGS APP CON 124.0 257.875	SPRINGS TOWER 119.9 360.6	GND CON 121.7 348.6	CLNC DEL 134.45 363.125
----------------------------	---	-------------------------------------	-------------------------------	-----------------------------------



6700 9000 ADANE		NUTVE	
RW31		JATOL	8600
0.8 NM to RW31		7800	
3.04° TCH 52			
0.8		4.2 NM	6.1 NM
CATEGORY	A	B	C
LP MDA	6440-1	284 (300-1)	6440-7/8 284 (300-7/8)
LNAV MDA	6560-1	404 (400-1)	6560-1 1/8 404 (400-1 1/8)
CIRCLING	6740-1	6800-1	7040-2 1/2 7260-3
	553 (600-1)	613 (700-1)	853 (900-2 1/2) 1073 (1100-3)