

LOC/DME I-AHI	APP CRS	Rwy Ldg
109.1	352°	13500
Chan 28		TDZE 6118
		Apt Elev 6187

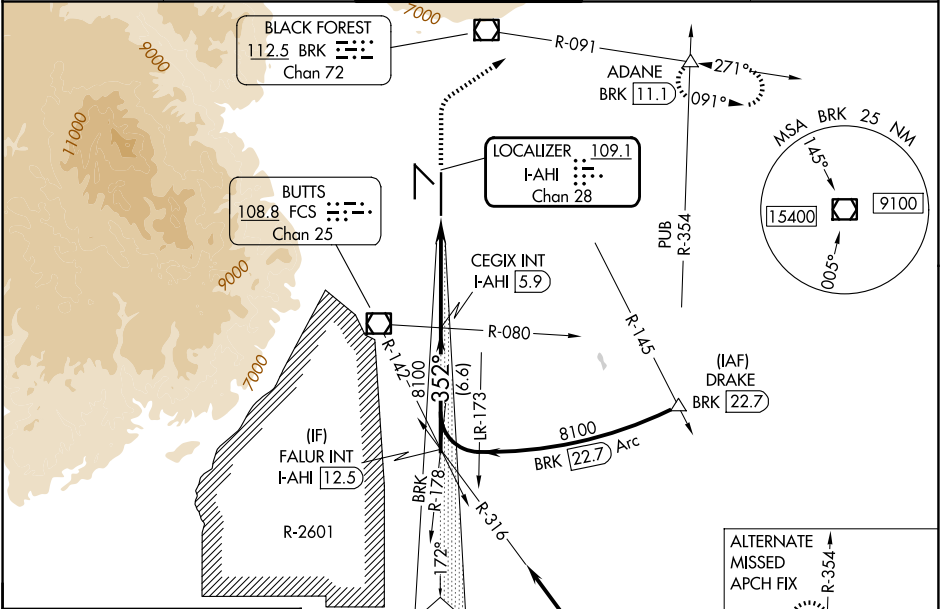
ILS or LOC RWY 35R

CITY OF COLORADO SPRINGS MUNI (COS)

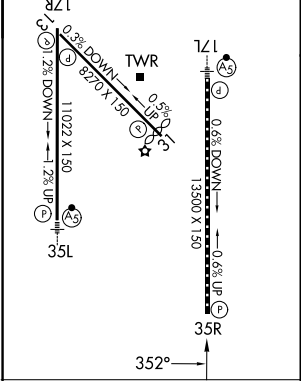
RADAR required when R-2601 in use.

MISSED APPROACH: Climb to 6700 then climbing right turn to 9000 on heading 047° and on BRK VOR/DME R-091 to ADANE INT/BRK 11.1 DME and hold.

ATIS	SPRINGS APP CON	SPRINGS TOWER	GND CON	CLNC DEL
125.0 254.3	124.0 257.875	119.9 360.6	121.7 348.6	134.45 363.125



ELEV 6187	D	TDZE 6118
MIRL Rwy 13-31		
HIRL Rws 17R-35L and 17L-35R		
REIL Rws 13, 17R, 31 and 35R		
TDZ/CL Rws 17L and 35R		



Procedure NA for arrival on  
PUB VORTAC airway radials  
267 CW 354.

IAF  
PUEBLO  
116.7 PUB  
Chan 114

ALTERNATE  
MISSED  
APCH FIX

R-245  
PUB  
116.7  
Chan 114

R-354  
DRAKE  
PUB  
118.7

112.1 HGO  
Chan 58

VGSI and ILS glidepath not coincident (VGSI Angle 3.00/TCH 71).		6700	9000	ADANE
FALUR INT I-AHI 12.5		CEGIX INT I-AHI 5.9	BRK R-091	△
8100		8100	I-AHI DME ANTENNA	
GS 3.00° TCH 55		Use I-AHI DME when on the localizer course.		*LOC only
6.6 NM		5.3 NM	0.8 NM	
CATEGORY	A	B	C	D
S-ILS 35R	6318/40 200 (200-¾)			
S-LOC 35R	6420/55 302 (300-1)	6420/45 302 (300-¾)		
CIRCLING	6740-1 553 (600-1)	6800-1 613 (700-1)	7040-2½ 853 (900-2½)	7260-3 1073 (1100-3)