

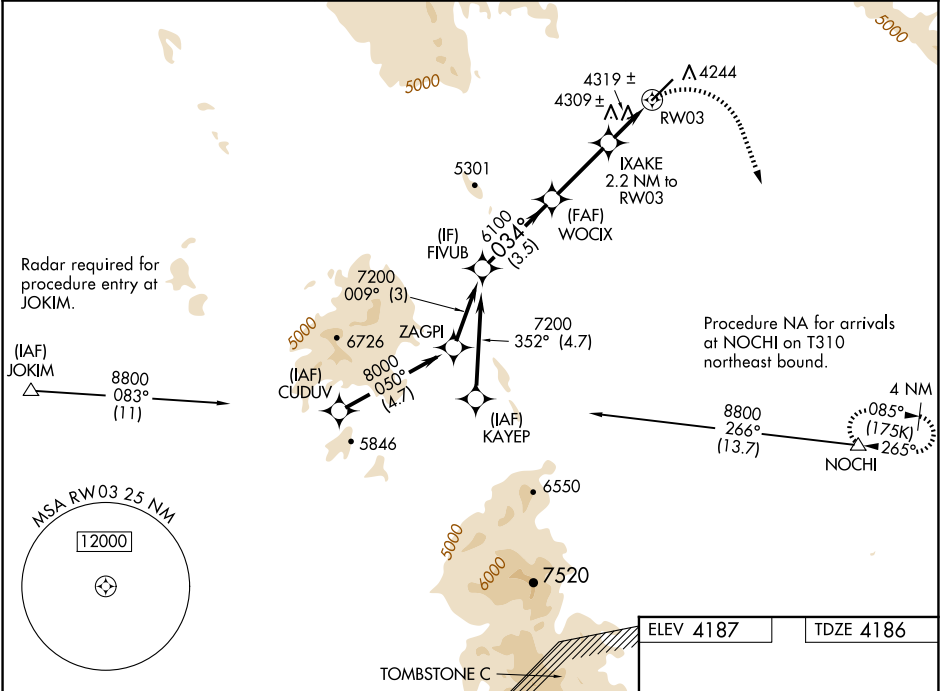
APP CRS 034°	Rwy Ldg	6095
	TDZE	4186
	Apt Elev	4187

RNAV (GPS) RWY 3

COCHISE COUNTY (P33)

RNP APCH - GPS.	
<div><div></div><div>When local altimeter setting not received, use Douglas Bisbee altimeter setting. VDP NA with Douglas Bisbee altimeter setting.</div></div>	
MISSED APPROACH: Climbing right turn to 8800 direct NOCHI and hold, continue climb-in-hold to 8800.	

AWOS-3PT 119.025	ALBUQUERQUE CENTER 134.45 327.15	UNICOM 122.8 (CTAF) 0
----------------------------	--	---------------------------------



	FIVUB	WOCIX	IXAKE	NOCHI
	7200	6100	5040	8800
	034°	3.50° TCH 40	0.9 NM to RW03	
	3.5 NM	2.9 NM	1.3 NM	0.9 NM
CATEGORY	A	B	C	D
LNAV MDA	4560-1	374 (400-1)		NA
CIRCLING	4600-1 413 (500-1)	4660-1 473 (500-1)		NA
DOUGLAS BISBEE ALTIMETER SETTING MINIMUMS				
LNAV MDA	4680-1	494 (500-1)		NA
CIRCLING	4720-1 533 (600-1)	4780-1 593 (600-1)		NA

