

WILCOX, ARIZONA

AL-85 (FAA)

25163

WAAS CH 77618 W21A	APP CRS 214°	Rwy Ldg 6095 TDZE 4187 Apt Elev 4187
--	------------------------	---

APP CR
214°

Rwy Ldg	6095
TDZE	4187
Apt Elev	4187

RNAV (GPS) RWY 21
COCHISE COUNTY (P33)

COCHISE COUNTY (P33)

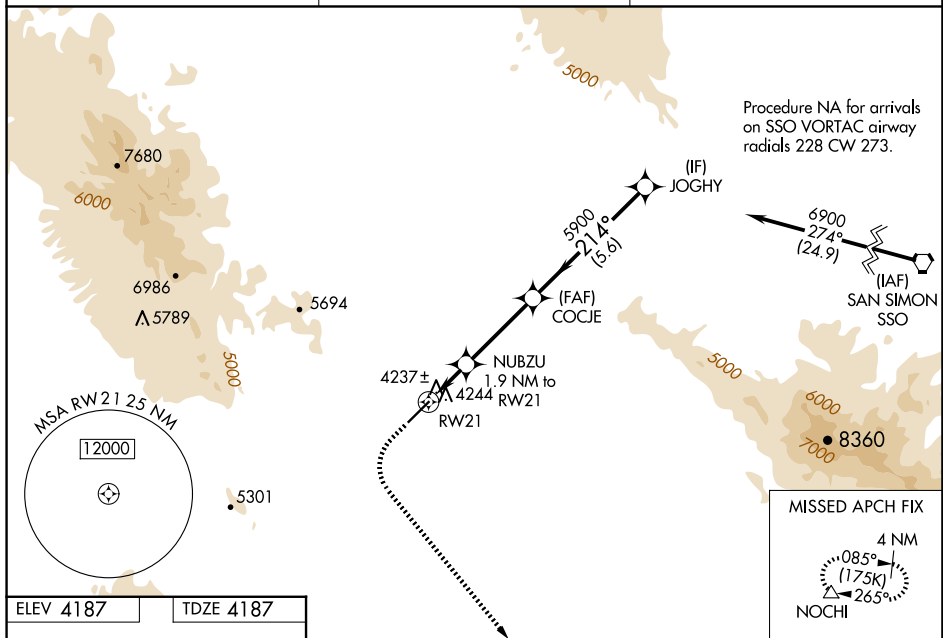
RNP APCH - GPS.

⚠ Baro-VNAV NA when using Douglas Bisbee altimeter setting. For uncompensated Baro-VNAV systems, LNAV/VNAV NA below -23°C or above 54°C. When local altimeter setting not received, use Douglas Bisbee altimeter setting and increase LPV DA to 4555 feet and all visibilities $\frac{1}{2}$ SM; increase LNAV/VNAV DA to 4555 feet and all visibilities $\frac{1}{2}$ SM; increase all MDAs 120 feet.

MISSED APPROACH: Climb to 4600 then climbing left turn to 8800 direct NOCHI and hold, continue climb-in-hold 8800.

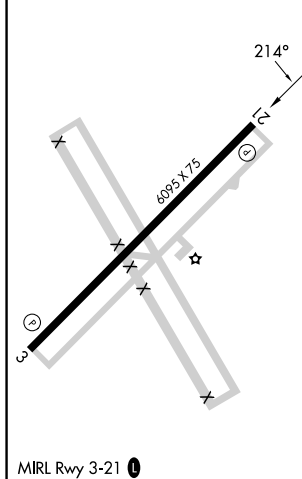
AWOS-3PT
119.025

ALBUQUERQUE CENTER
134.45 327.15

UNICOM
122.8 (CTAF) **L**

ELEV 4187

TDZE 4187



<div style="display: flex; justify-content: space-around;"> <div style="text-align: center;">4600 ↑</div> <div style="text-align: center;">8800 ↖</div> <div style="text-align: center;">NOCHI △</div> </div>						
CATEGORY	A		B		C	D
LPV DA	4437-7/8 250 (300-7/8)				NA	
LNAV/VNAV	4437-7/8 250 (300-7/8)				NA	
LNAV MDA	4520-1 333 (400-1)				NA	
CIRCLING	4600-1 413 (500-1)		4660-1 473 (500-1)		NA	

WILCOX, ARIZONA

Amdt 1C 02NOV23

32°15'N-109°54'W

COCHISE COUNTY (P33)

RNAV (GPS) RWY 21

SW-4, 07 AUG 2025 to 04 SEP 2025