


CLEVELAND, OHIO

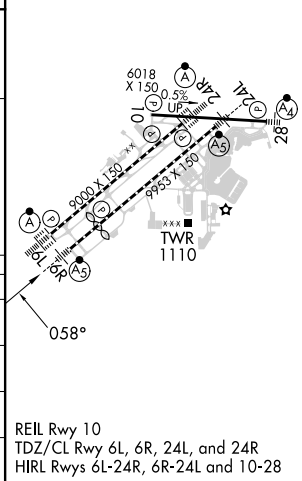
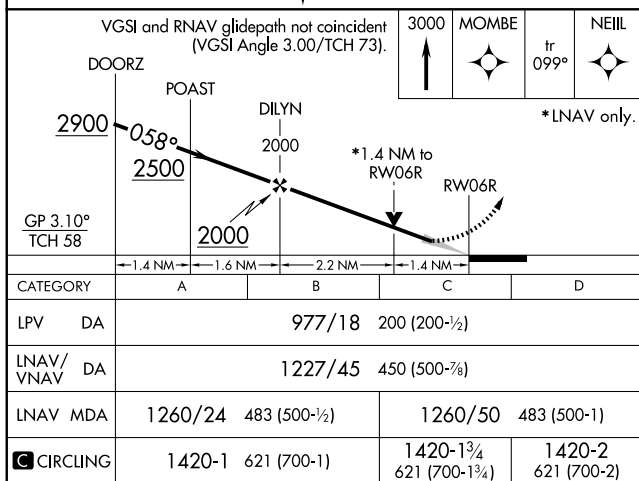
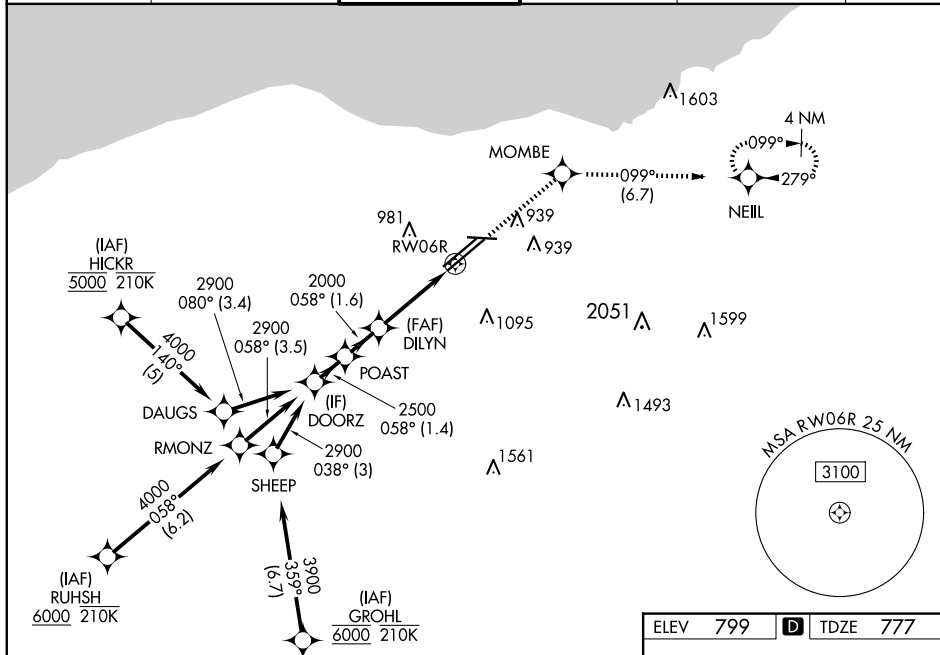
AL-84 (FAA)

24305

WAAS CH <b>81806</b> <b>W06B</b>	APP CRS <b>058°</b>	Rwy Idg <b>8029</b> TDZE <b>777</b> Apt Elev <b>799</b>
--	------------------------	---

RNAV (GPS) Y RWY 6R  
CLEVELAND-HOPKINS INTL (CLE)

RNP APCH.				MALSR 		MISSED APPROACH: Climb to 3000 direct MOMBE and on track 099° to NEIII and hold.	
<div> <div>▼</div> <div>           For uncompensated Baro-VNAV systems, LNAV/VNAV NA below -18°C (0°F) or above 46°C (114°F). Circling Rwy 10 NA at night. For inop ALS, increase LNAV Cats C/D visibility to 1½ SM.         </div> </div>							
D-ATIS ARR <b>127.85</b> DEP <b>132.375</b>	CLEVELAND APP CON <b>126.55 346.325</b>	<b>CLEVELAND TOWER</b> <b>124.5 273.45</b>	GND CON <b>121.7 273.45</b>		CLNC DEL <b>125.05 273.45</b>		CPDLC



CLEVELAND, OHIO  
Amdt 3 24MAY18

41°25'N-81°51'W

CLEVELAND-HOPKINS INTL (CLE)  
RNAV (GPS) Y RWY 6R

EC-2, 07 AUG 2025 to 04 SEP 2025