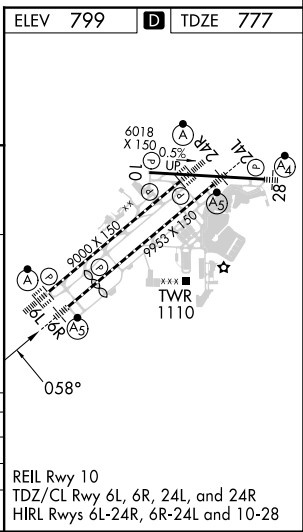
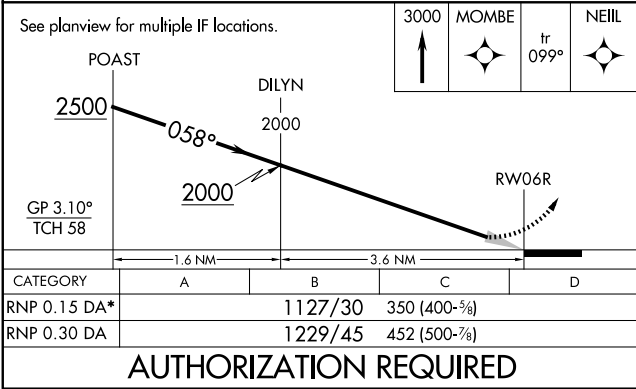
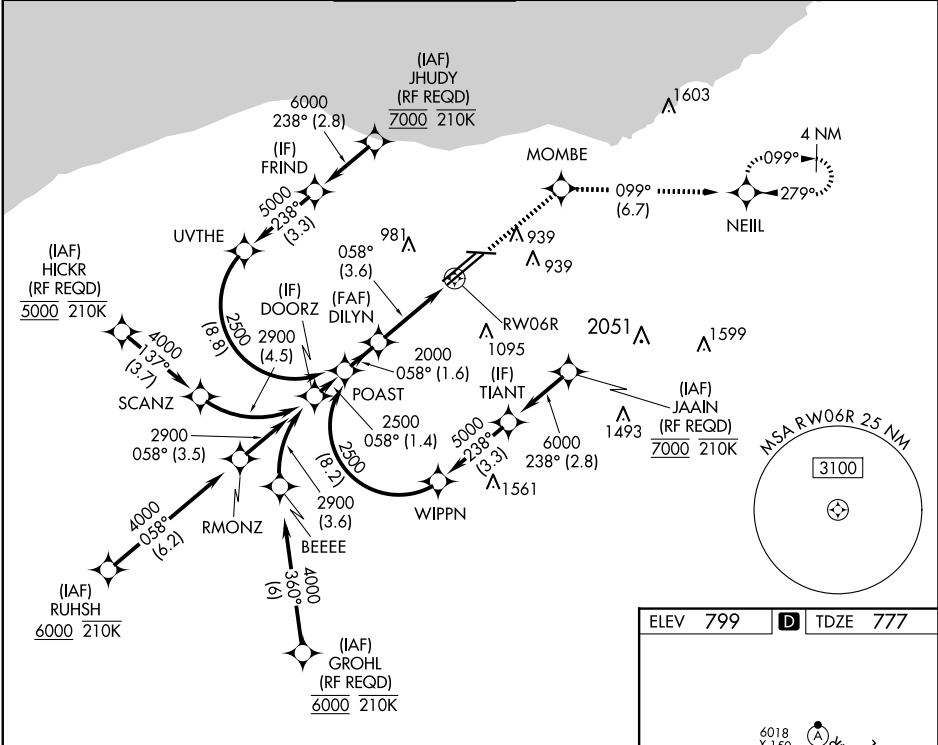


APP CRS	Rwy Idg	8029
058°	TDZE	777
	Apt Elev	799

RNAV (RNP) Z RWY 6R  
CLEVELAND-HOPKINS INTL (CLE)

RNP AR APCH.			MALSR	MISSED APPROACH: Climb to 3000 direct MOMBE and on track 099° to NEILL and hold. *Missed approach requires minimum climb of 270 feet per NM to 1400.	
For uncompensated Baro-VNAV systems, procedure NA below -18°C (0°F) or above 46°C (114°F). For inop ALS, increase RNP 0.15 all Cts visibility to RVR 5500.					
D-ATIS ARR 127.85 DEP 132.375	CLEVELAND APP CON 126.55 346.325	CLEVELAND TOWER 124.5 273.45	GND CON 121.7 273.45	CLNC DEL 125.05 273.45	CPDLC



EC-2, 07 AUG 2025 to 04 SEP 2025

EC-2, 07 AUG 2025 to 04 SEP 2025